

BATON ROUGE SSO PROGRAM PROGRESS REPORT

SEPTEMBER 2009



PUBLIC WORKS

Prepared for

City of Baton Rouge/
East Baton Rouge Parish
Department of
Public Works



Prepared by

CH2MHILL

In association with

SIGMA Consulting Group, Inc.

BATON ROUGE SSO

Program



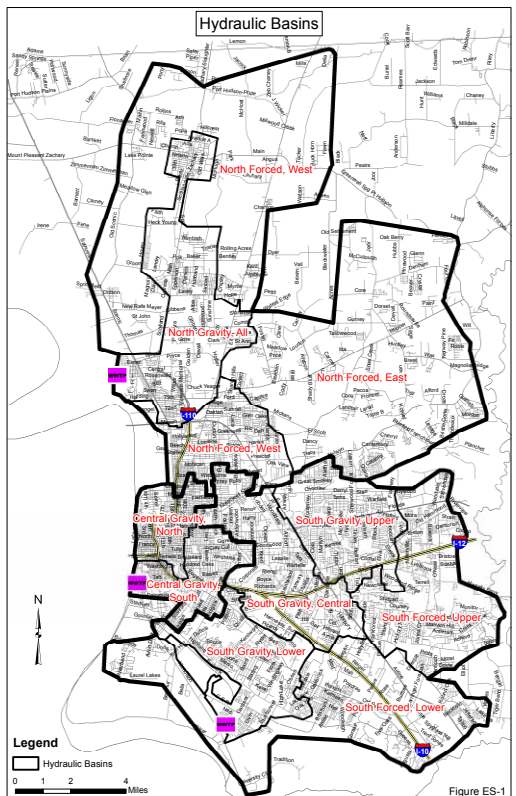
PROGRAM MANAGEMENT

The SSO Program Management Team (PMT) has the overall responsibility for the successful planning and delivery of the SSO Program. The PMT role includes such activities as conducting preliminary engineering studies; hydraulic modeling and master planning; flow monitoring and Inflow and infiltration (I/I) reduction studies; sewer system evaluation surveys (SSES); conceptual design for sewer and pump station upgrades and rehabilitation projects; review of engineering designs with oversight authority coordinated through DPW; planning; financial services; general project and potential construction management oversight; coordination of servitude and right-of-way acquisition; potential legal representation related to ongoing Consent Decree, environmental permitting; and public awareness programs.

The PMT works closely with the City of Baton Rouge/East Baton Rouge Parish (C-P) Department of Public Works (DPW) to ensure the Program complies with the EPA Consent Decree (visit: http://www.brprojects.com/sewer/pages/programinfo_regulatory.htm to view a copy of the Consent Decree).

The PMT is committed to a continuing focus on accountability, open communication and involvement, environmental responsibility, engineering quality, and on-time, on-budget delivery of projects and program.

The evaluation of ten hydraulic basins in the C-P is critical to planning and prioritizing SSO Projects.

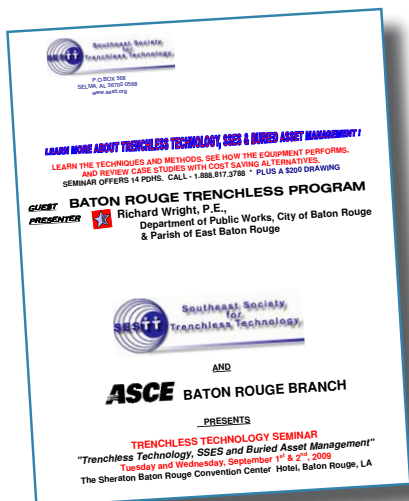
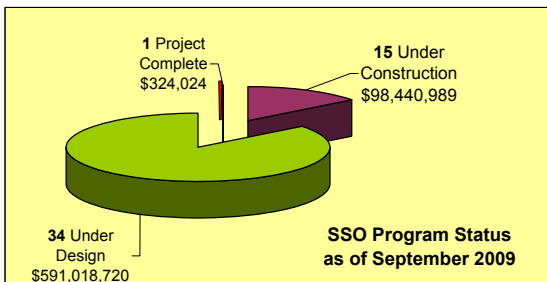


- As of September 2009, the SSO Program completed 1 project and has another 49 either in design or construction.
- More than 50% of the total SSO projects are underway!

Communicating with the Public is a Priority!

Trenchless Technology Seminar

On September 1-2, the Southeast Society for Trenchless Technology (SESTT) and the American Society of Civil Engineers (ASCE) Baton Rouge Branch hosted a Trenchless Technology Seminar in Baton Rouge to interested engineering firms. Over 24 presentations and exhibits were provided to show new trenchless techniques and method alternatives. At the request of SESST/ASCE, Mr. Rick Wright, P. E., Department of Public Works, City of Baton Rouge & Parish of East Baton Rouge gave a presentation on the “Baton Rouge Trenchless Program” using specific examples of technology currently being used in the SSO Program.



For more information about SESTT, a non-profit organization established to promote trenchless technology education visit: <http://www.sestt.org/>

SSO Update Presentation

On September 24th, the American Public Works Association (APWA), Baton Rouge Chapter, in conjunction with the Louisiana Engineering Society (LES) hosted a joint luncheon at the LSU Faculty Club. At the request of ASCE/LES, Peter Newkirk/Director of Public Works and Michael Ellis/SSO Program Manager presented an update on the Sanitary Sewer Overflow Program. This presentation is available to public on the SSO website. (please visit: http://www.brprojects.com/sewer/pages/publicinfo_meetings.htm).



collection and conveyance system overflows, and discharge permit violations cited at its wastewater treatment plants.

In 2009, an Agreement and Order Regarding the Modification of the Consent Decree was approved by the United States and State of Louisiana, which specifically adopts the City/Parish's September 2008 Second Remedial Measures Action Plan (RMAP2) which includes projects addressing the consolidation of the Central Wastewater Treatment Plant and South Wastewater Treatment Plant. The consolidation projects will eliminate the Central Wastewater Treatment Plant and route the wastewater flows from the Central Basin area to the South Wastewater Treatment Plant for treatment. This new design save the City/Parish community approximately \$20M by eliminating a discharge permit and the associated operations/maintenance costs typical at a wastewater treatment plant and will also improve efficiencies by maintaining a more constant flow throughout the system. In addition, the consolidation projects are also environmentally beneficial to the community.

Upon SSO Program completion, the City-Parish will benefit from a state of the art sewer system that will accommodate future economic development and improve the quality of life for Parish residents.

To learn more about the consent decree and the modifications, please visit the Program web-site/regulatory information at: http://www.brprojects.com/sewer/pages/programinfo_regulatory.htm

The screenshot shows a web page for the Baton Rouge SSO Program. The left sidebar contains navigation links: BATON ROUGE LOOP, RAINAGE & BRIDGES, BUILDINGS, and a logo for the BATON ROUGE SSO Program. Below the logo are sections for GENERAL PROGRAM INFORMATION, PUBLIC INFORMATION, and CONSULTANT/CONTRACTOR INFORMATION, each with a list of links. The main content area has a green header for 'REGULATORY INFORMATION:' followed by a detailed paragraph about the 2002 Consent Decree and the 2009 Consent Decree Modification. Below this is a section for 'PUBLIC REGULATORY DOCUMENT REPOSITORY:' with a list of available documents.

REGULATORY INFORMATION:

The Consent Decree between the City of Baton Rouge/East Baton Rouge Parish (C-P), the U.S. Environmental Protection Agency (EPA), and the State of Louisiana was entered into in 1988. Since that time, terms have been refined and negotiated and were updated in the 2002 Consent Decree. The 2002 Consent Decree takes the place of the original document. However an "Agreement and Order Regarding the Modification of the Consent Decree" was lodged in late 2008 and then was approved by the EPA, State of Louisiana, and the Department of Justice (DOJ) in early 2009. The 2009 Consent Decree Modification includes additional provisions to the terms of the 2002 Consent Decree. The 2009 Consent Decree Modification adopts the C-P September 2008 Second Remedial Measures Action Plan (RMAP2) which includes comprehensive rehabilitation projects, capacity improvement projects, and wastewater treatment and storage improvement projects. In addition, there are some specific projects associated with the consolidation of the Central and South Wastewater Treatment Plants that are also a part of the plan. These projects are expected to improve efficiencies, and position the C-P for millions of dollars in fiscal savings through the 25-year planning period. The C-P is currently following both the 2002 Consent Decree and the 2009 Consent Decree modification.

Periodically the Baton Rouge City/Parish Department of Public Works posts regulatory resources and deliverables associated with the 2002 Consent Decree and the 2009 Consent Decree Modification in the Public Regulatory Document Repository.

For more information, a complete copy of both documents can be accessed by clicking on the links below:

- Entire 2002 Consent Decree (PDF, 10.00MB)
- 2009 Consent Decree Modification (PDF, 5.46KB)

PUBLIC REGULATORY DOCUMENT REPOSITORY:

Below is a list of public regulatory documents currently available.

- Consent Decree Fact Sheet (PDF, 112KB)
- Consent Decree Glossary (PDF, 19KB)
- Consent Decree/Regulatory Reporting Documents (Web Page)

Screen shot of the www.brprojects.com website.

SCHEDULE

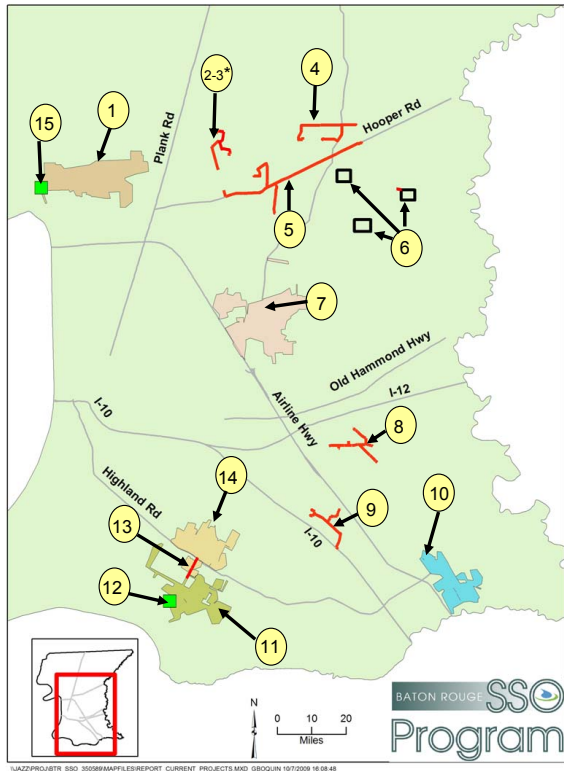
#	Project Name	DPW Project #	Design Consultant	Construction Contractor	Status	Construction Bid Amount	Project Start	Advertise for Construction	Project End
1	RMAP1 - Kleinpeter Area Upgrades	03-RMP-S14	Monroe & Corie	Allen & LeBlanc	Closed	\$324,024	2/1/2008	7/14/2008	5/8/2009
2	Jefferson Highway-Hoo Shoo Too	07-AR-US-0049	DPW	Allen & LeBlanc	Construction	\$2,239,396	5/16/2007	6/27/2008	11/21/2009
3	Gurney Road - Joor Road	07-PS-BD-0017	Neel-Schaffer	Grady Crawford	Construction	\$1,396,347	1/18/2008	8/29/2008	11/21/2009
4	Staring Lane Extension (PhI: Burbank-Highland)	06-WC-CP-0036	Monroe & Corie	James Construction	Construction	\$4,615,500	1/11/2008	9/19/2008	8/24/2010
5	RMAP1 - PS136 Area Upgrades	99-RMP-S16	Sigma Consulting	Nottingham Construction	Construction	\$8,811,368	2/1/2008	10/24/2008	5/11/2010
6	RMAP1 - Industriplex Area Upgrades	99-RMP-S08	Forte & Tablada	BRH Garver	Construction	\$9,382,914	3/10/2008	10/31/2008	1/29/2010
7	Gardere Lane - Burbank Road	08-AR-UF-0003	CSRS, Inc.	Allen & LeBlanc	Construction	\$5,957,955	5/16/2007	11/14/2008	5/26/2010
8	Immediate Action Projects Combined	08-TP-BD-0031	CDM / MWH / URS Corp.	Brasfield & Gorrie	Construction	\$25,632,000	11/6/2006	12/12/2008	9/2/2010
9	Foster Road - Hooper Road	07-FM-BD-0046	PEC	Hemphill Construction	Construction	\$8,761,675	2/14/2008	1/9/2009	4/28/2010
10	Comite Drive - Foster Road (PhI)	07-PS-BD-0019	Monroe & Corie	Hemphill Construction	Construction	\$1,921,037	3/3/2008	1/16/2009	1/27/2010
11	Sullivan Rd/Lovett Rd/Wax Rd	07-PS-BD-0018	Hartman Engineering	Don M. Barron Contractor	Construction	\$2,158,346	1/17/2008	1/16/2009	2/25/2010
12	Staring Lane - Boone Drive	08-AR-UF-0004	CSRS, Inc.	Grady Crawford	Construction	\$5,426,575	11/27/2007	1/23/2009	5/10/2010
13	Oak Villa Blvd - Choctaw Street	08-AR-UF-0005	CSRS, Inc.	Grady Crawford	Construction	\$8,997,369	4/14/2008	5/15/2009	7/7/2011
14	Comite Drive - Foster Road (PhII)	02-CS-HC-0001	Monroe & Corie	JB James Construction	Construction	\$895,957	6/23/2008	6/26/2009	6/22/2010
15	NWWTP Odor Control	07-WT-TP-0030	Env. Eng Svcs	TBA	Near Construction	TBA	6/29/2007	10/16/2009	7/15/2010
16	Scotland Avenue - Progress Road	09-AR-BD-0011	CSRS, Inc.	TBA	Near Construction	TBA	9/9/2008	9/4/2009	11/25/2010
17	Elm Grove Garden - Harding Blvd	09-AR-BD-0012	CSRS, Inc.	TBA	Design	TBA	10/1/2008	11/16/2009	1/27/2011
18	South Capacity Group Project 2	08-PS-IF-0046	ABMB Eng.	TBA	Design	TBA	3/10/2008	10/30/2009	8/14/2012
19	Sharp Road - Florida Blvd	09-AR-BD-0013	CSRS, Inc.	TBA	Design	TBA	1/15/2009	12/18/2009	3/31/2011
20	South Boulevard - St. Joseph Street	08-GS-ST-0018	Evans-Graves	TBA	Design	TBA	3/27/2008	1/29/2010	11/1/2011
21	25th Street - North Acadian Thruway	09-GS-UF-0008	Hartman Engineering	TBA	Design	TBA	2/2/2009	1/29/2010	10/27/2011
22	Highland Road - Buchanan Street	08-GS-ST-0021	Burk-Kleinpeter/ Justice & Huang (A JV)	TBA	Design	TBA	3/13/2008	2/5/2010	3/18/2011
23	Kenilworth Drive - Boone Drive	09-AR-BD-0014	CSRS, Inc.	TBA	Design	TBA	3/26/2009	1/22/2010	5/6/2011
24	Downtown Area - PS15,19, 60, 59	08-PS-ST-0056/57	Shaw Environmental & Infrastructure, Inc.	TBA	Design	TBA	3/24/2008	1/29/2010	6/10/2011
25	Capitol Lake - Gayosa Drive	07-PS-BD-0048	Shread-Kuyrkendall & Associates, Inc.	TBA	Design	TBA	1/14/2008	1/29/2010	7/21/2011
26	Staring Lane - PS58 Improvements (PhII: Highland-Perkins)		Monroe & Corie	TBA	Design	TBA	4/8/2008	1/29/2010	6/1/2012
27	Citiplace/Essen Lane Area - PS119	08-FM-UF-0024	GSA Consulting Engineers, Inc.	TBA	Design	TBA	2/25/2008	2/5/2010	6/1/2011
28	Foster Drive - Government Street		CSRS, Inc.	TBA	Design	TBA	5/25/2009	3/22/2010	7/29/2011
29	SWWTP Wet Weather Improve (PhI)	08-TP-BD-0033	CDM	TBA	Design	TBA	6/23/2008	4/1/2010	9/28/2012
30	Brookstown Road - Evangeline Street (PhI)		CSRS, Inc.	TBA	Design	TBA	7/10/2009	5/10/2010	9/17/2012
31	Highland Road - Burbank Drive	08-FM-ST-0023	GOTECH, Inc.	TBA	Design	TBA	3/31/2008	5/14/2010	7/13/2012
32	Central Pump Station - PS 42	09-PS-UF-0003	MWH	TBA	Design	TBA	10/21/2008	5/21/2010	10/19/2012
33	Hooper Storage	09-PS-UF-0007	TRC Engineers	TBA	Design	TBA	1/19/2009	5/21/2010	12/8/2011
34	Zachary Area Transmission Network	06-WC-IF-0014	SJB/Owen & White	TBA	Design	TBA	3/24/2008	5/28/2010	5/16/2013
35	North Capacity Group Project 1A	08-GS-UF-0053	URS Corp.	TBA	Design	TBA	3/10/2008	6/18/2010	9/27/2013
36	Pump Station 58A Overflow	09-PS-UF-0001	GEC	TBA	Design	TBA	1/5/2009	7/23/2010	6/20/2013
37	North Capacity Group Project 1B	08-PS-UF-0054	Evans-Graves / Burk Kleinpeter	TBA	Design	TBA	3/10/2008	7/30/2010	10/12/2011
38	Staring Lane - PS58 Improvements (PhIII: Perkins-PS58)		Monroe & Corie	TBA	Design	TBA	4/30/2009	9/10/2010	1/15/2013
39	Choctaw Storage and PS Facility	09-PS-UF-0009	CDM	TBA	Design	TBA	4/14/2008	9/17/2010	7/27/2012
40	Consolidated FM (2,3,5,7,10)	09-FM-MS-0033	Shread-Kuyrkendall & Associates, Inc.	TBA	Design	TBA	11/7/2008	10/22/2010	10/21/2012
41	Perkins/Old Perkins Area - Booster PS514 Improvements	09-PS-MS-0034	GEC	TBA	Design	TBA	4/24/2009	10/22/2010	2/25/2013
42	Consolidated Pump Stations (2,3,4,5,6,7,10 and 91)	09-PS-MS-0035	Burk Kleinpeter / JGG	TBA	Design	TBA	11/7/2008	10/29/2010	10/12/2012
43	Plank Road - Kleinpeter Road	09-GS-UF-0028	Forte & Tablada	TBA	Design	TBA	3/23/2009	12/31/2010	3/13/2013
44	SWWTP Wet Weather Improve (PhII)	08-TP-BD-0055	MWH	TBA	Design	TBA	10/14/2008	1/7/2011	1/22/2014
45	Central Consolidation- PS42 FM	09-FM-MS-0036	SJB/Owen & White	TBA	Design	TBA	11/7/2008	1/28/2011	11/28/2012
46	Multiple PS - Jefferson Highway - Park Forest Drive	09-PS-MS-0046	CSRS, Inc.	TBA	Design	TBA	6/8/2009	5/23/2011	3/31/2014
47	Multiple PS - Nicholson Dr - Brightside Dr	09-PS-MS-0048	Arcadis	TBA	Design	TBA	9/14/2009	5/24/2011	9/30/2013
48	Bayou Duplantier Area Sewer Upgrades	09-GS-MS-0042	Neel-Schaffer	TBA	Design	TBA	8/31/2009	9/9/2011	1/15/2014
49	Nicholson Dr - Highland Rd - Perkins Rd	09-GS-MS-0047	Buchart - Horn	TBA	Design	TBA	6/29/2009	9/9/2011	1/15/2014
50	Government St - S. Acadian Thruway	09-GS-MS-0043	GSA Consulting Engineers, Inc.	TBA	Design	TBA	8/28/2009	9/9/2011	1/15/2014



CONSTRUCTION



As of September 30, 2009, there are 15 ongoing construction projects throughout the City-Parish:



Map of City of Baton Rouge/East Baton Rouge Parish showing locations of 15 construction projects under the SSO Program.

1 Scotland Avenue – Progress Road Area Upgrades is a rehabilitation project located in the northern portion of East Baton Rouge Parish and is included in the North Gravity Hydraulic Basin. Approximately 178,615 liner feet of various sizes of sewer pipe, 2,562 laterals and 775 manholes will be inspected by CCTV and rehabilitated as determined. Estimated construction cost is \$9.4M. Construction is estimated to start **November 2009** and end March 2011 (ahead of schedule).



775 manholes will be inspected in the Scotland Avenue – Progress Road Area

2-3 Comite Drive – Foster Road Area Upgrades is a two phase capacity improvement project located in the northern portion of East Baton Rouge Parish and is included in the North Forced Basin. This project includes the replacement of three pump stations and the upsizing of approximately 19,000 linear feet of 6” and 8” forcemain. Estimated construction cost for the two phases is approximately \$3M. Construction started in March 2009 and is scheduled to end June 2010 (ahead of schedule).



Trench boxes are used for the gravity line installation in the Comite – Foster Area.

4 Gurney Road – Joor Road Area Upgrades is a capacity improvement project located in the northern portion of East Baton Rouge Parish and is included in the North Forced Basin. This project includes the replacement of one pump station as well as approximately 14,500 linear feet of various sizes of forcemain and 100 feet of 15” gravity sewer. Estimated construction cost is approximately \$1.4M. Construction started in October 2008 and is scheduled to end 4th Quarter 2009 (ahead of schedule).



Posted construction signage in the Gurney – Joor project area.

5 Foster Road – Hooper Road Area Upgrades is a capacity improvement project located in the northern portion of East Baton Rouge Parish and is included in the North Forced Basin. This project includes the construction of approximately 26,000 linear feet of various sizes of forcemain. Estimated construction cost is approximately \$8.7M. Construction started in March 2009 and is scheduled to end April 2010 (ahead of schedule).



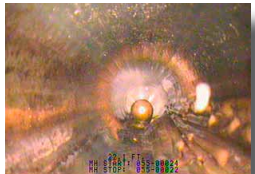
The forcemain near Booster Pump Station 511 goes down Hooper Road approximately 5,700 linear feet.

6 Sullivan Road/Lovett Road/Wax Road Area Upgrades is a capacity improvement project located in the northern portion of East Baton Rouge Parish. Three pump stations will be replaced as well as upsizing approximately 6,300 linear feet of forcemain sewer pipe. Estimated construction cost is \$2.1M. Construction started 1st quarter 2009 and is scheduled to end February 2010.



Pump Station 230 will be replaced in the Sullivan Road area.

7 Oak Villa Blvd – Choctaw Street Area Upgrades is a rehabilitation project located in the northern portion of East Baton Rouge Parish and is included in the South Gravity Hydraulic Basin. Approximately 245,000 liner feet of sewer pipe and 982 manholes will be inspected by CCTV and rehabilitated as determined. Estimated construction cost is \$9M. Construction started July 2009 and is scheduled to end July 2011.



Approximately 245,000 linear feet of pipe was inspected in the Oak Villa area.



8 RMAP1 – PS136 Area Upgrades

is located in the Lake Sherwood Acres area and consists of the demolition of four existing pump stations and 27,000 linear feet of associated forcemain. Approximately 10,900 linear feet of new gravity sewer in various sizes will route flow to the new centralized 4.5M gallon per day pump station (PS) 136. Estimated construction cost is \$8.8M. Construction started December 2008 and is scheduled to end May 2010 (ahead of schedule).



Construction at PS136, a 4.5M gallon per day pump station, continues.

9 RMAP1 – Industriplex Area Upgrades is located in the Siegen Lane / Industriplex Boulevard Area.

The project consists of demolishing six pump stations and constructing a new gravity system that will route flows to one new centralized pump station on Exchequer Drive. Estimated construction cost is \$9.4M. Construction started December 2008 and is scheduled to end January 2010 (ahead of schedule).



A new centralized pump station will be constructed in the industriplex area.

10 Jefferson Highway – Hoo Shoo Road Area Upgrades is located in the South Forced Lower Basin.

Approximately 117,110 linear feet of sewer pipe and 553 manholes will be inspected by CCTV and rehabilitated as determined. Estimated construction cost is \$2.4. Construction started September 2008 and will complete in November 2009 (pending Metro Council approval of change order).



Construction in the Jefferson Highway will complete in November 2009.

11 Gardere Lane - Burbank Road Area Upgrades is a

rehabilitation project located in the South Gravity Lower Hydraulic Basin. Approximately 200,500 linear feet of sewer pipe and 743 manholes will be inspected by CCTV and rehabilitated as determined. Estimated construction cost is \$5.9M. Construction started in January 2009 and is scheduled to end May 2010.



200,500 linear feet of pipe is inspected in the Gardere – Burbank area.

12 SWWTP Immediate Action Projects are located at the South Wastewater Treatment Plant and include primary clarify mechanical replacement, tickling filter pump station and piping/pumping modifications to the digester complex (will be implemented to assist the plant in complying with effluent permit limits). Estimated construction cost is \$25.6M. Construction is scheduled to end September 2010.



Geotechnical investigations begin conducted at the SWWTP.

13 Staring Lane Extension Phase 1 The SGC-C-PS58A (Staring Lane – Overflow Pump Station) project includes the construction of a new overflow pump station (PS 58A), which will pump flow directly to the South WWTP. Approximately 2,960 linear feet of forcemain will be constructed. Estimated construction cost is \$4.6M. Construction started in May 2009 and is scheduled to end August 2010.



Horizontal-Directional Drilling in the Staring Lane Extension area.

14 Staring Lane – Boone Drive Area Upgrades is a rehabilitation project located in the South Gravity Lower Hydraulic Basin. Approximately 148,000 linear feet of gravity pipe and 657 manholes will be inspected by CCTV and rehabilitated as determined. Estimated construction cost is \$5.4M. Construction started in March 2009 and is scheduled to be completed in May 2010.



657 manholes will be inspected in the Staring Lane area.

15 North Wastewater Treatment Plant Odor Control project will reduce odor problems at the North Plant. The project will include odor control improvements at the plant, five surrounding pump stations and in the collection system. Estimated construction cost is \$2.7M. Construction is scheduled to start 4th quarter 2009 and is scheduled to end July 2010.



Odor problems will be reduced in the North WWTP.



Looking Ahead...

Construction Bids due

- Annual Parishwide Homeowners Sewage Pump System Installation and Maintenance Project: November 24, 2009
- Bywater Faircrest and Contour Aerial Crossings: December 1, 2009
- NWWTP Odor Equipment Installation: December 1, 2009
- Annual Parishwide Wastewater Collection System Emergency Repairs: December 1, 2009
- Elm Grove Garden – Harding Blvd Rehabilitation Project: December 1, 2009

For detailed information on the projects above, please visit the web-site at

http://www.brprojects.com/sewer/pages/contractor_calendar.htm



BATON ROUGE SSO PROGRAM PROCESS REPORT

SEPTEMBER 2009

300 North Boulevard, Room 208
Baton Rouge, LA 70802
(225) 389-3158
DPW@brgov.com

Monarch butterflies begin their migration South each September.
Photos taken by Connie Saxton