

# Baton Rouge SSO Program

*Progress Report*



*October 2010*



Prepared for  
City of Baton Rouge/  
East Baton Rouge Parish  
Department of Public Works

Prepared by  
**CH2MHILL**

In association with  
SIGMA Consulting Group, Inc.  
ILSI Engineering

BATON ROUGE   
Program



## Program Management

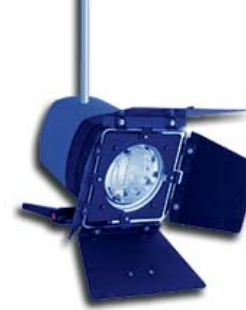


The Sanitary Sewer Overflow (SSO) Program is improving and rehabilitating sewer infrastructure throughout East Baton Rouge Parish. The 85 projects in the program involve capacity improvements to pipes and pump stations, inspection and rehabilitation of sewer lines, and improvements to wastewater treatment and storage facilities.

The 57 capacity improvement projects will reduce hydraulic bottlenecks in the system and convey wet weather flows to new storage facilities or the existing wastewater treatment plants. The 26 sewer rehabilitation projects involve a "find and fix" process where CCTV is used to inspect sewer pipelines, and repairs are made to areas needing improvements. Rehabilitation or reconstruction work is also performed on those areas where flow monitoring has indicated the highest levels of inflow and infiltration (I/I) into sewer pipes. The nine storage and wastewater treatment plant projects involve expanding treatment plant capacity to accommodate peak flow and replacing plant components, as well as storing wastewater in the system during peak flows.

### Are we working in your neighborhood?

As more projects enter the construction phase, early notification to communities of potential impacts or road closures is more important than ever. The Program Communications Team is using a variety of methods to keep residents and businesses informed, including door hangers, letters, post cards, and presentations at community meetings. We also continue to use the Project Information line (225.588.5678) and to look for other creative ways to educate the public about the importance of the program and inform them of possible impacts. If you would like a presentation to your homeowners association, neighborhood club or other community organization, let us know! Call 225.588.5678 or send an email to [help@brprojects.com](mailto:help@brprojects.com).



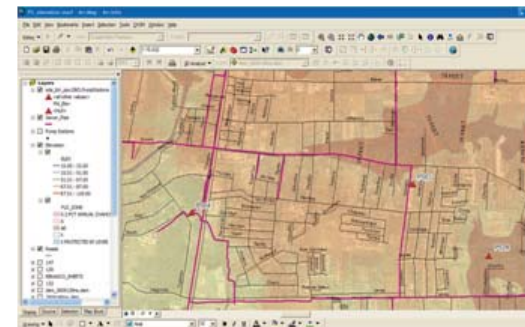
## Technology Focus...

Using GIS for Planning

Geographical Information Systems (GIS) allows for the collection, storage, manipulation, analysis, and display of geographical information in a comprehensive map format. In East Baton Rouge Parish, GIS is used to provide a graphical representation of the location of the manholes, sewer pipes, pump stations, pump station service areas, and rehab and capacity areas. SSO Program staff use GIS to create maps of the sewer system that are used as a basis for design engineering and to determine pipeline routes.

Additionally, GIS is also used to:

- Provide elevation profiles to determine flow of wastewater through the system
- Locate wetland areas
- Identify land acquisition required
- Report documentation



Sewer Collection System Map



3-D GIS map showing location of proposed storage tanks

### SSO Program Overview

- \$1.2B Infrastructure Improvement Program
- 85 Sewer Projects

### October 2010 Status

- 71 active projects
  - » 8 projects completed
  - » 32 projects in construction
  - » 31 projects under design

### Program Highlights

- More than 160 different firms have participated in SSO Program projects
- Actively supporting Disadvantaged Business Enterprise (DBE) participation
- Coordinating with the Green Light Program continues to improve effectiveness and reduce construction related disruptions to residents.
- Installation of emergency generators at all pump stations

## Project Information

## Project Components

## Consultant/Contractor Information

## Cost

## Schedule

COMPLETED

#	Project Name	Project Type	DPW Project #	Number of Upgraded Pump Stations	Number of Replaced/ Rehabilitated Manholes*	Linear Feet of Forcemain Improvements	Linear Feet of Gravity Main Improvements	Design Consultant	Construction Contractor	Construction Bid Amount	Project Start	Advertise for Construction Bid	Project End
1	Jefferson Highway-Hoo Shoo Too Road	Rehab	07-AR-US-0049	-	553	-	-	DPW	Allen & LeBlanc	\$2,239,396	5/16/2007	6/27/2008	9/22/2009
2	Staring Lane - Boone Drive	Rehab	08-AR-UF-0004	-	665	-	139,050	CSRS, Inc.	Grady Crawford	\$5,416,540	11/27/2007	1/23/2009	5/3/2010
3	Staring Lane FM (PH1 - Burbank to Highland)	Capacity	06-WC-CP-0036	-	-	2,260	-	Monroe & Corie	James Construction	\$4,615,500	1/11/2008	9/19/2008	6/14/2010
4	Gurney Road - Joor Road	Capacity	07-PS-BD-0017	1	-	14,475	-	Neel-Schaffer	Grady Crawford	\$1,396,347	1/18/2008	8/29/2008	10/2/2009
5	RMAP1 - Kleinpeter Area Upgrades	RMAP1	03-RMP-S14	1	-	2,000	-	Monroe & Corie	Allen & LeBlanc	\$324,024	2/1/2008	7/14/2008	5/8/2009
6	RMAP1 - PS136 Area Upgrades	RMAP1	99-RMP-S16	9	-	27,700	20,700	Sigma Consulting	Nottingham Construction	\$8,928,241	2/1/2008	10/26/2008	9/30/2010
7	Comite Drive - Foster Road (PH1)	Capacity	07-PS-BD-0019	3	-	12,080	-	Monroe & Corie	Hemphill Construction	\$1,921,037	3/3/2008	1/16/2009	6/30/2010
8	25th Street - North Acadian Thruway	Capacity	09-GS-UF-0008	-	-	-	-	Hartman Engineering	(design only)	-	2/2/2009	-	3/4/2010

**14                      1,218                      58,515                      159,750                      \$24,841,085**

UNDER CONSTRUCTION

#	Project Name	Project Type	DPW Project #	Number of Upgraded Pump Stations	Number of Replaced/ Rehabilitated Manholes*	Linear Feet of Forcemain Improvements	Linear Feet of Gravity Main Improvements	Design Consultant	Construction Contractor	Construction Bid Amount	Project Start	Advertise for Construction Bid	Project End
1	RMAP1 - Industripex Area Upgrades	RMAP1	99-RMP-S08	6	-	4,000	-	Forte & Tablada	BRH Garver	\$9,674,634	3/10/2008	10/31/2008	11/30/2010
2	Burbank Road - Gardere Lane	Rehab	08-AR-UF-0003	-	787	-	168,300	CSRS, Inc.	Allen & LeBlanc	\$6,126,532	5/16/2007	11/14/2008	11/20/2010
3	SWWTP IAPs Combined	WWTP	08-TP-BD-0031	-	-	-	-	CDM, MWH, URS Corp.	Brasfield & Gorrie	\$27,159,964	11/6/2006	12/12/2008	3/2/2011
4	Foster Road - Hooper Road	Capacity	07-FM-BD-0046	-	-	26,200	-	PEC	Hemphill Construction	\$8,761,675	2/14/2008	1/9/2009	11/30/2010
5	Sullivan Rd/Lovett Rd/Wax Rd	Capacity	07-PS-BD-0018	3	-	4,200	2,100	Hartman Engineering	Don M. Barron Contractor	\$2,158,346	1/17/2008	1/16/2009	2/1/2011
6	Oak Villa Blvd - Choctaw Street	Rehab	08-AR-UF-0005	-	966	-	238,425	CSRS, Inc.	Grady Crawford	\$8,997,369	4/14/2008	5/15/2009	9/7/2011
7	Comite Drive - Foster Road (PH2)	Capacity	02-CS-HC-0001	-	-	-	1,361	Monroe & Corie	JB James Construction	\$895,957	6/23/2008	6/27/2009	12/30/2010
8	Scotland Avenue - Progress Road	Rehab	09-AR-BD-0011	-	775	-	189,250	CSRS, Inc.	Magnolia Construction	\$9,207,594	9/9/2008	9/29/2009	3/14/2011
9	Elm Grove Garden Road - Harding Blvd	Rehab	09-AR-BD-0012	-	839	-	199,500	CSRS, Inc.	Allen & LeBlanc	\$12,989,271	10/1/2008	9/29/2009	6/13/2011
10	WWTP Odor Control	WWTP	07-WP-TP-0030	-	-	-	-	Environmental Eng Svcs	SEMS, Inc.	\$2,279,038	6/29/2007	10/30/2009	11/19/2010
11	Group Project 2 - Small Pump Stations	Capacity	08-PS-IF-0046	7	-	-	-	ABMB Eng.	Grady Crawford	\$3,476,003	3/10/2008	3/26/2010	8/15/2011
12	SWWTP Wet Weather Improve (PH1)	WWTP	08-TP-BD-0033	-	-	-	-	CDM	Brasfield & Gorrie	\$113,227,000	6/23/2008	3/26/2010	4/18/2013
13	South Blvd-St. Joseph St / 25th St - N. Acadian Thruway	Capacity	08-GS-ST-0018	-	-	18,360	3,000	Evans-Graves	Reynolds, Inc.	\$17,965,049	3/27/2008	4/16/2010	1/12/2012
14	Sharp Road - Florida Blvd	Rehab	09-AR-BD-0013	-	1,154	-	274,475	CSRS, Inc.	Reynolds, Inc.	\$17,492,855	1/15/2009	4/16/2010	4/23/2012
15	Highland Road - Buchanan Street	Capacity	08-GS-ST-0021	-	-	4,465	8,390	Burk-Kleinpeter/Justice & Huang (JV)	Gilmore & Sons Construction	\$4,325,851	3/14/2008	4/23/2010	10/5/2011
16	Capitol Lake Dr - Gayosa St / 25th St. - N. Acadian Thruway	Capacity	07-PS-BD-0048	-	-	19,320	19,150	Shread-Kuykendall & Associates, Inc.	Morgan Contracting, Inc. of FL	\$10,497,568	1/14/2008	6/18/2010	3/19/2012
17	Emergency Generators Purchasing	Other	09-PS-BD-0037	-	-	-	-	N/A	ARCCO	\$19,100,000	2009	6/18/2010	2010
18	Foster Drive - Government Street (PHA)	Rehab	09-AR-BD-0015	-	629	-	80,600	CSRS, Inc.	Grady Crawford	\$4,819,752	5/25/2009	6/25/2010	2/17/2012
19	Staring Lane FM (PH2 - Highland to Perkins)	Capacity	06-WC-CP-0036	-	-	12,363	-	Monroe & Corie	J.B. James	\$10,715,000	4/4/2008	8/6/2010	1/30/2013
20	Citilplace/Essen Area - PS119 and FM Improvements	Capacity	08-FM-UF-0024	1	-	8,100	-	GSA Consulting Engineers, Inc.	BRH Garver	\$2,801,502	2/25/2008	8/20/2010	6/27/2012
21	Zachary Area Transmission Network (PH1)	Capacity	10-FM-IF-0002	3	-	-	-	SJB/Owen & White	Max Foote Construction	\$18,486,500	3/24/2008	8/20/2010	4/12/2013
22	Zachary Area Transmission Network (PH4)	Capacity	10-FM-IF-0005	-	-	42,500	-	SJB/Owen & White	Wicker Construction	\$7,091,115	3/24/2008	8/27/2010	1/14/2013
23	Downtown Area - PS15, PS19, PS59, PS60	Capacity	08-PS-ST-0056/57	4	-	-	-	Shaw Environmental & Infrastructure, Inc.	Guy Hopkins Construction Co.	\$4,841,000	3/24/2008	9/3/2010	12/18/2012
24	Foster Drive - Government Street (PHB)	Rehab	09-AR-BD-0015	-	-	-	78,700	CSRS, Inc.	Insituform Technologies	\$2,863,100	5/25/2009	9/17/2010	2/17/2012
25	Kenilworth Blvd - Boone Drive	Rehab	09-AR-BD-0014	-	1,159	-	72,000	CSRS, Inc.	Allen & LeBlanc	\$5,186,129	3/26/2009	10/8/2010	3/16/2012
26	Zachary Area Transmission Network (PH3)	Capacity	10-FM-IF-0004	-	-	27,000	-	SJB/Owen & White	Hemphill Construction	\$8,947,920	3/24/2008	10/15/2010	5/9/2013
27	Brookstown Road - Evangeline Street (PH1)	Rehab	10-AR-BD-0039	-	1,150	-	161,000	CSRS, Inc.	TBA**	\$10,982,500	7/10/2009	10/15/2010	11/13/2012
28	Choctaw Storage and PS Facility	WWTP	09-PS-UF-0009	3	-	25,000	-	CDM	TBA**	\$55,000,000	4/14/2008	10/22/2010	12/20/2012
29	Highland Road - Burbank Drive	Capacity	08-FM-ST-0023	-	-	39,400	-	GOTECH, Inc.	TBA**	\$20,724,000	3/31/2008	10/29/2010	12/31/2012
30	Group Project 1A (Veterans Parkway - Gravity Mains)	Capacity	08-GS-UF-0053	-	-	-	46,000	URS Corp.	TBA**	\$26,843,000	3/10/2008	10/29/2010	1/4/2013
31	Nicholson Dr - Highland Rd - Perkins Rd (PHA)	Capacity	09-FM-MS-0047	-	-	8,400	3,400	Buchart - Horn	TBA**	\$11,365,000	6/29/2009	10/29/2010	12/9/2013
32	Emergency Generators Installation	Other	09-PS-BD-0037	-	-	-	-	N/A	TBA**	\$11,000,000	2010	-	2013

**27                      7,459                      239,308                      1,545,651                      \$476,001,223**

\* All manholes are inspected in the project area. Only some are rehabilitated or replaced.  
 \*\* Contractor is yet to be selected. The construction bid amount is the engineering estimate.



UNDER DESIGN

Project Information			Consultant Information		Cost	Schedule		
#	Project Name	Project Type	DPW Project #	Design Consultant	Estimated PDP Construction Value	Project Start	Advertise for Construction Bid	Project End
1	Brookstown Road - Evangeline Street (PH2)	Rehab	10-AR-BD-0040	CSRS, Inc.	\$10,982,500	10/8/2009	11/12/2010	9/26/2012
2	Multiple PS - Jefferson Highway - Park Forest Drive	Capacity	09-PS-MS-0046	CSRS, Inc.	\$2,620,000	6/8/2009	12/10/2010	10/17/2012
3	Group Project 1B (Veterans Parkway - PS and FM)	Capacity	08-PS-UF-0054	Evans-Graves / Burk Kleinpeter	\$19,309,000	3/10/2008	12/17/2010	5/6/2013
4	Central Consolidation- PS42 FM	Capacity	09-FM-MS-0036	SJB/Owen & White	\$25,021,000	11/7/2008	12/17/2010	1/30/2013
5	PS 58 Overflow Pump Station	Capacity	09-PS-UF-0001	GEC	\$15,750,000	1/5/2009	12/17/2010	4/24/2013
6	Central Consolidation FM (2,3,5,7,10)	Capacity	09-FM-MS-0033	Shread-Kuyrkendall & Associates, Inc.	\$10,601,000	11/7/2008	12/17/2010	12/18/2012
7	Perkins/Old Perkins Area - Booster PS514 Improvements	Capacity	09-PS-MS-0034	GEC	\$10,397,000	4/24/2009	12/17/2010	2/23/2013
8	Silverleaf Road - Ford Street	Rehab	10-AR-BD-0041	CSRS, Inc.	\$10,505,000	10/26/2009	1/7/2011	5/25/2012
9	Zachary Area Transmission Network Improvements - PH2	Capacity	10-FM-IF-0003	SJB/Owen & White	\$14,583,700	3/24/2008	1/14/2011	4/12/2013
10	Central Consolidated Pump Stations (2,3,4,5,6,7,10 and 91)	Capacity	09-PS-MS-0035	Burk Kleinpeter / JJG	\$16,592,000	11/7/2008	1/21/2011	11/26/2012
11	Bluebonnet Blvd - Jefferson Hwy Ph 1	Rehab	10-AR-MS-0043	CSRS, Inc.	\$6,685,000	2/8/2010	2/18/2011	6/25/2012
12	Bluebonnet Blvd - Jefferson Hwy Ph 2	Rehab	10-AR-UF-0042	CSRS, Inc.	\$6,685,000	3/23/2010	2/25/2011	7/9/2012
13	Nicholson Dr - Highland Rd - Perkins Rd - PHB	Capacity	09-FM-MS-0047	Buchart - Horn	\$11,365,000	6/29/2009	2/25/2011	12/9/2013
14	Bayou Duplantier Area Sewer Upgrades	Capacity	09-GS-MS-0042	Neel-Schaffer	\$4,374,000	8/31/2009	3/11/2011	7/18/2013
15	Staring Lane FM (PH3 - Perkins to PS58)	Capacity	06-WC-CP-0036	Monroe & Corie	\$9,550,000	4/30/2009	3/18/2011	6/27/2013
16	Central Pump Station - PS 42	Capacity	09-PS-UF-0003	MWH	\$6,695,070	10/21/2008	3/18/2011	3/22/2013
17	Hooper Storage	Treatment/ Facilities	09-PS-UF-0007	TRC Engineers	\$19,115,000	1/19/2009	4/1/2011	11/27/2012
18	SWWTP Wet Weather Improve (PH2)	Treatment/ Facilities	08-TP-BD-0055	MWH	\$107,219,000	10/1/2008	4/1/2011	9/12/2014
19	Multiple PS - Nicholson Dr - Brightside Dr	Capacity	09-PS-MS-0048	Arcadis U.S., Inc.	\$6,113,000	9/14/2009	3/25/2011	9/16/2013
20	Government St - S. Acadian Thruway	Capacity	09-GS-MS-0043	GSA Consulting Engineers, Inc.	\$4,680,000	8/28/2009	4/15/2011	1/15/2014
21	Plank Road - Kleinpeter Road	Capacity	09-GS-UF-0028	Forte & Tablada	\$7,583,000	3/23/2009	4/29/2011	1/15/2014
22	Acadian Thruway - Perkins Road	Rehab	TBA	CSPS	\$3,915,500	8/2/2010	4/29/2011	9/6/2012
23	Stanford Avenue - Morning Glory Road	Rehab	TBA	CSPS	\$6,876,000	8/2/2010	5/27/2011	10/10/2012
24	Acadian Thruway - Claycut Road	Rehab	TBA	CSPS	\$7,449,000	8/24/2010	7/8/2011	11/14/2012
25	O'Neal Lane Pipeline Projects	Capacity	10-FM-MS-0008	URS Corp.	\$17,286,000	9/29/2009	9/9/2011	1/21/2014
26	Airline Highway Pipeline Projects	Capacity	10-GS-MS-0007	ABMB Eng.	\$35,240,000	1/30/2009	9/23/2011	12/6/2013
27	Multiple PS - Highland Rd - Kenilworth Parkway	Capacity	10-PS-MS-0009	AECOM	\$8,926,760	2/8/2010	11/18/2011	7/24/2014
28	Hooper Road Pump Station	Capacity	10-PS-MS-0048	Stanley	\$11,935,000	5/3/2010	3/16/2012	7/22/2014
29	O'Neal Lane Pump Stations A	Capacity	10-PS-MS-0050	MWH	\$12,226,000	5/25/2010	6/21/2012	10/30/2014
30	O'Neal Lane Pump Stations B	Capacity	10-PS-MS-0051	URS Corp.	\$9,800,000	5/25/2010	6/2012	10/2014
31	Lovett Road - Greenwell Springs	Capacity	10-FM-MS-0049	SJB/Owen & White	\$18,145,000	5/2010	5/18/2012	12/30/2014

\$458,224,530

## *Recently Advertised*

### **Group Project 1A Capacity Improvement**

**Project.** Advertised for construction bids in late October 2010. This project involves the installation of approximately 46,000 linear feet of gravity sewer ranging in diameter from 18"-54". Also includes manholes, jacked and bored casing and pipe, micro-tunneled casing and pipe, and associated appurtenances and improvements. Bid opening is scheduled for December 14, 2010.

### **Brookstown Road – Evangeline Street Sewer Rehabilitation Project Phase II.**

Advertised for construction bids in mid November 2010. The project includes the rehabilitation of existing sewer lines by open excavation and cured-in-place lining, manhole repair and replacement, and cleaning and televising of gravity sewer lines and manholes within the designated area. Includes approximately 21,600 linear feet of 6"-30" diameter pipe by open-cut repairs; and 57,400 linear feet of 8"-18" pipe; and 5,000 linear feet of 24"-30" pipe diameter by CIPP rehabilitation. Bid opening is scheduled for December 14, 2010.

### **Highland Road – Burbank Drive Capacity Improvement Project.**

Advertised for construction bids in late October 2010. This project involves the installation of approximately 6,200 linear feet of 60" force main, 23,700 linear feet of 54" force main and 9,500 linear feet of 48" force main, jacked and bored casing and pipe, horizontal directional drilling, and associated force main tie-ins, appurtenances and improvements. Bid opening is scheduled for December 16, 2010.

### **Choctaw Storage and Pump Station Facilities Capacity Improvement Project.**

Advertised for construction bids in late October 2010. This project involves the demolition of existing big peak and little peak storage facilities; construction of a new 20 MG and 6 MG equalization storage tanks; construction of a new 46 MGD pump station 52A; construction of new 12 MGD pump station 51A; construction of a new 5.1 MGD pump station 51AA; and construction of approximately 25,000 linear feet of associated pipeline and appurtenances. Bid opening is scheduled for December 21, 2010.

## *Upcoming Projects to be Advertised for Construction*

The following projects are expected to advertise for construction bids in January 2011:

- Multiple Pump Stations - Jefferson Highway - Park Forest Drive Capacity Improvement Project
- Silverleaf Road - Ford Street Rehabilitation Project
- Zachary Area Transmission Network Improvements - Phase 2: Red Mud Lakes FM Capacity Improvement Project
- PS 58 Overflow Pump Station Capacity Improvement Project
- Perkins/Old Perkins Area - Booster PS514 Capacity Improvement Project



## BATON ROUGE SSO PROGRAM PROGRESS REPORT

OCTOBER 2010

BATON ROUGE SSO  
Program

300 North Boulevard, Room 208  
Baton Rouge, LA 70802  
(225) 389-3158  
DPW@brgov.com

