



# **Baton Rouge SSO Program**

## **2002 Consent Decree**

**Quarterly Report No. 8**

---

**April 23, 2004**



## Department of Public Works

City of Baton Rouge  
Parish of East Baton Rouge

Post Office Box 1471  
Baton Rouge, Louisiana  
70821

April 23, 2004

### CERTIFIED – RETURN RECEIPT REQUESTED

Chief,  
Water Enforcement Branch (6EN-W)  
Compliance Assurance and Enforcement Division  
U.S. Environmental Protection Agency, Region VI  
1445 Ross Avenue  
Dallas, Texas 75202-2733

Re: City of Baton Rouge and Parish of East Baton Rouge  
Consent Decree-Civil Action No. 01-978-B-M3  
Eighth Quarterly Report - **Period Ending March 31, 2004**

Gentlemen:

Pursuant to Paragraph 51 of the Consent Decree, the City of Baton Rouge and Parish of East Baton Rouge hereby submits the 8<sup>th</sup> Consent Decree Quarterly Report covering activities for the quarter ending March 31, 2004. This report contains a summary of compliance with and activities related to:

- Cross Connection Elimination Plan
- Collection System Preventive Maintenance Program (PMP)
- Sanitary Sewer Overflow Response Plan (SSORP)
- Reporting of Unauthorized Discharges
- Supplemental Environmental Projects (SEP)
- Consent Decree Compliance Status

These activities are described in Sections VIII, IX, X, XI, XX and XXI of the Consent Decree.

Pursuant to Paragraph 49 and 117 of the Consent Decree, the City of Baton Rouge and Parish of East Baton Rouge hereby submits for review and approval three copies of the 8<sup>th</sup> Consent Decree Quarterly Report to the US EPA and LDEQ and one copy to the US DOJ and City/Parish DPW.

I certify that the information contained in or accompanying this document is true, accurate and complete. As to identified portions of this document for which I cannot personally verify their truth and accuracy, I certify as the official having supervisory

Mr. Fred E. Raiford III

April 23, 2004

Page 2

responsibility for the persons who, acting under my direct instructions, made the verification, that this is true, accurate and complete.

Sincerely,



Fred E. Raiford III  
Director

Cc: Honorable Bobby Simpson, Mayor-President  
Mr. Paul Thompson, Chief Administrative Officer  
Chief, Environmental Enforcement Section, US DOJ  
Mr. Bruce Hammatt, LDEQ  
Ms. Peggy Hatch, LDEQ  
Mr. Carlos Zequeira, (6RC-EA)  
Ms. Vivian Hare, (6EN-WC)  
Mr. Jim Thompson  
Mr. Jerome Klier  
Mr. Jeff Broussard  
Mr. Kent A. Mudd  
Mr. Robert Groht  
Mr. Mark LeBlanc  
Mr. David Ratcliff  
Mr. Bill McHie, MWH

# Table of Contents

	<u>PART</u>
<b>CROSS CONNECTION ELIMINATION PLAN</b>	<b>A</b>
<b>COLLECTION SYSTEM PREVENTIVE MAINTENANCE PROGRAM (PMP)</b>	<b>B</b>
<b>SANITARY SEWER OVERFLOW RESPONSE PLAN (SSORP)</b>	<b>C</b>
<b>REPORTING OF UNAUTHORIZED DISCHARGES</b>	<b>D</b>
<b>SUPPLEMENTAL ENVIRONMENTAL PROJECTS (SEP)</b>	<b>E</b>
<b>CONSENT DECREE COMPLIANCE STATUS</b>	<b>F</b>

**Part A:**  
Cross Connection  
Elimination Plan

**Baton Rouge Consent Decree Quarterly Report  
 Part A - Cross Connection Elimination Plan**

**Requirement:** Pursuant to Paragraph 16, Section VIII of the Consent Decree, if the City/Parish identifies any Cross Connection in the Collection System, it shall be permanently sealed or eliminated within 30 days of identification or if the City/Parish elects to have the work performed by a contractor, within 60 days of identification.

**Summary of Activities**

No cross connections were discovered during this quarter. There is no anticipated non-compliance. During the reporting period 233,337 linear feet of sewer was smoke tested to identify violations of City/Parish ordinances regarding private cross connections. No private cross connections were identified. There were no exceptions in enforcing the ban on private cross connections.

<b>Summary</b>	<b>North Plant LA0036439 AI# 4843</b>	<b>Central Plant LA0036421 AI# 4842</b>	<b>South Plant LA0036412 AI# 4841</b>	<b>Total</b>
Total No. of Cross Connections Identified:	0	0	0	0
Total No. of Cross Connections Eliminated:	0	0	0	0
Total No. of Private Cross Connections Identified:	0	0	0	0
Total No. of Private Cross Connections Eliminated:	0	0	0	0

**Part A – Cross Connection Elimination Plan**

<b>Summary of Cross Connections Identified</b>						
<b>Number</b>	<b>Date Identified</b>	<b>Location</b>	<b>Private (Y/N)</b>	<b>Current Status</b>	<b>Notice Date</b>	<b>Date Eliminated</b>
<b>North Plant (LA0036439 AI# 4843)</b>						
1						
2						
3						
<b>Central Plant (LA0036421 AI# 4842)</b>						
1						
2						
3						
<b>South Plant (LA0036412 AI# 4841)</b>						
1						
2						
3						

The City/Parish  [is]  [is not] in compliance with Section VIII Elimination of Cross Connections for the period 1 / 01 / 04 to 3 / 31 / 04. If not, see comments above.

**Part B:**  
Preventive Maintenance  
Program (PMP)



## **Consent Decree Quarterly Report Part B - Preventive Maintenance Program (PMP)**

**Requirement:** Pursuant to Exhibit I of the Consent Decree, the City/Parish shall report compliance and include a brief narrative summary of activities related to compliance and/or noncompliance with the Preventive Maintenance Program during the reporting period. In accordance with the Collection System Preventive Maintenance Plan, Paragraph 1.4, specific activities performed related to collection system preventive maintenance will be reported to the EPA and LDEQ on a quarterly basis.

### **Summary of Activities**

During the reporting period we have followed our standard operating procedures, and continued to follow the equipment manufacturers' recommended operation and maintenance requirements, as referenced in the Collection System Preventive Maintenance Plan. We completed development of the electronic tracking system for maintenance activities at the three treatment plants, similar to the tracking system established for the pump stations. As part of this electronic tracking system, the PM Work Order program generates work orders electronically in the Hansen system for each of the Wastewater Treatment Facilities. When completed the work orders are closed and a historical record of the maintenance is stored electronically. The PM Work Order program was fully implemented at all three WWTPs during this reporting period.

The table on page B-2 provides a summary of collection system preventive maintenance activities during the reporting period. As indicated, the primary preventive maintenance activity is inspection of facilities, including gravity sewers (through CCTV), manholes, ARVs and other facilities. We provided information for each treatment plant service area and identified whether the activity was routine (standard preventive maintenance) or corrective (in response to a particular complaint or perceived problem) in nature.

We do not anticipate any non-compliance related to preventive maintenance activities in the future.

There were no problems encountered or deficiencies identified in the Preventive Maintenance Program plans.

## Part B - Preventive Maintenance Program (PMP)

### Summary of Collection System Activities

	Quarterly Total Jan-Mar 2004	Cumulative 2004 Annual Total	2004 Annual Goal
<b>Gravity Collection System (8,510,000ft/38,000MH)</b>			
Lines Cleaned (ft)	455,895	455,895	<b>570,000</b>
CCTV Inspected (ft)	351,875	351,875	<b>570,000</b>
Smoke Tested (ft)	233,337	233,337	----
Smoke Tested (no. of locations)	157	157	----
Dye Water Flooded (no. of locations)	73	73	----
Manholes Inspected (no.)	446	446	<b>2,500</b>
Lines Repaired (no.)	601	601	----
MH Rehabbed (no.)	57	57	----
<b>Force Mains (240 miles)</b>			
Visual Surface Inspection (miles)	31.3	31.3	<b>120</b>
Repaired (no.)	3	3	----
<b>Air Release Valves (604)</b>			
Inspected/Maintained	223	223	<b>960 to 1,200</b>
Repaired (no.)	27	27	----
<b>Pump &amp; Lift Stations (421)</b>			
Inspections (no.)	16,592	16,592	<b>45,136</b>
Wet wells cleaned	127	127	----
Repaired (no.)	8	8	----
<b>Peak Flow Storage Facilities (2)</b>			
Little Peak site visits	39	39	<b>104</b>
Big Peak site visits	39	39	<b>104</b>

\*\*Attached are separate Collection System Activity Sheets for each Treatment Plant Service Area.

The City/Parish  [is]  [is not] in compliance with Section IX Preventive Maintenance Program Plan for the period 1 / 01 / 04 to 3 / 31 / 04. If not, see comments above.

**Part B – Preventive Maintenance Program (PMP)  
Summary of Activities by Treatment Plant Service Area**

**North Plant (LA0036439)**

	<u>Routine Maintenance</u>	<u>Corrective Maintenance</u>	<u>Quarterly Total Jan-Mar 2004</u>
<b>Gravity Collection System (2,460,000ft/10,640MH)</b>			
Lines Cleaned (ft)	103,257	36,858	140,115
CCTV Inspected (ft)	103,257	0	103,257
Smoke Tested (ft)	7,340	9,625	16,965
Smoke Tested (no. of locations)	0	37	37
Dye Water Flooded (no. of locations)	0	7	7
Manholes Inspected (no.)	31	0	31
Lines Repaired (no.)	276	55	331
MH Rehabbed (no.)	0	15	15
<b>Force Mains (120 miles)</b>			
Visual Surface Inspection (miles)	16.8	0.0	16.8
Repaired (no.)	1	0	1
<b>Air Release Valves (335)</b>			
Inspected/Maintained	120	0	120
Repaired (no.)	0	15	15
<b>Pump &amp; Lift Stations (141)</b>			
Inspections (no.)	5,382	0	5,382
Wet wells cleaned	47	0	47
Repaired (no.)	0	4	4

Routine Maintenance-Day to day maintenance work or operational activities carried out on a regular basis, to keep the collection system operating properly. Generally routine maintenance consists of visual, mechanical, electrical, and electronic checks to ensure proper functioning of equipment. Routine maintenance also consists of sewer cleaning, smoke testing, dye water flooding, manhole inspection, and CCTV inspection.

Corrective Maintenance-Maintenance which is required to restore an item to a specified working order/condition, normally initiated as a result of a scheduled or routine inspection. Generally corrective maintenance consists of rehabilitation of gravity lines, manholes, force mains, etc. and generally in conjunction with system inspection activities. Corrective maintenance also consists of repairing or replacing a failed structure such as a pump station or storage facility.

**Part B – Preventive Maintenance Program (PMP)  
Summary of Activities by Treatment Plant Service Area**

**Central Plant (LA0036421)**

	<u>Routine Maintenance</u>	<u>Corrective Maintenance</u>	<u>Quarterly Total Jan-Mar 2004</u>
<b>Gravity Collection System (1,410,000ft/5,760MH)</b>			
Lines Cleaned (ft)	239,874	28,062	267,936
CCTV Inspected (ft)	239,874	0	239,874
Smoke Tested (ft)	140,571	32,867	173,438
Smoke Tested (no. of locations)	25	36	61
Dye Water Flooded (no. of locations)	25	27	52
Manholes Inspected (no.)	312	0	312
Lines Repaired (no.)	0	42	42
MH Rehabbed (no.)	0	12	12
<b>Force Mains (10 miles)</b>			
Visual Surface Inspection (miles)	0.0	0.0	0.0
Repaired (no.)	0	1	1
<b>Air Release Valves (18)</b>			
Inspected/Maintained	0	0	0
Repaired (no.)	0	0	0
<b>Pump &amp; Lift Stations (21)</b>			
Inspections (no.)	836	0	836
Wet wells cleaned	27	0	27
Repaired (no.)	0	0	0

Routine Maintenance-Day to day maintenance work or operational activities carried out on a regular basis, to keep the collection system operating properly. Generally routine maintenance consists of visual, mechanical, electrical, and electronic checks to ensure proper functioning of equipment. Routine maintenance also consists of sewer cleaning, smoke testing, dye water flooding, manhole inspection, and CCTV inspection.

Corrective Maintenance-Maintenance which is required to restore an item to a specified working order/condition, normally initiated as a result of a scheduled or routine inspection. Generally corrective maintenance consists of rehabilitation of gravity lines, manholes, force mains, etc. and generally in conjunction with system inspection activities. Corrective maintenance also consists of repairing or replacing a failed structure such as a pump station or storage facility.

**Part B – Preventive Maintenance Program (PMP)  
Summary of Activities by Treatment Plant Service Area**

**South Plant (LA0036412)**

	<b><u>Routine Maintenance</u></b>	<b><u>Corrective Maintenance</u></b>	<b><u>Quarterly Total Jan-Mar 2004</u></b>
<b>Gravity Collection System (4,640,000ft/21,580MH)</b>			
Lines Cleaned (ft)	8,744	39,100	47,844
CCTV Inspected (ft)	8,744	0	8,744
Smoke Tested (ft)	24,856	18,078	42,934
Smoke Tested (no. of locations)	0	59	59
Dye Water Flooded (no. of locations)	0	14	14
Manholes Inspected (no.)	103	0	103
Lines Repaired (no.)	113	115	228
MH Rehabbed (no.)	0	30	30
<b>Force Mains (110 miles)</b>			
Visual Surface Inspection (miles)	14.5	0.0	14.5
Repaired (no.)	0	1	1
<b>Air Release Valves (251)</b>			
Inspected/Maintained	103	0	103
Repaired (no.)	0	12	12
<b>Pump &amp; Lift Stations (259)</b>			
Inspections (no.)	10,374	0	10,374
Wet wells cleaned	53	0	53
Repaired (no.)	0	4	4
<b>Peak Flow Storage Facilities (2)</b>			
Little Peak site visits	39	0	39
Big Peak site visits	39	0	39

Routine Maintenance-Day to day maintenance work or operational activities carried out on a regular basis, to keep the collection system operating properly. Generally routine maintenance consists of visual, mechanical, electrical, and electronic checks to ensure proper functioning of equipment. Routine maintenance also consists of sewer cleaning, smoke testing, dye water flooding, manhole inspection, and CCTV inspection.

Corrective Maintenance-Maintenance which is required to restore an item to a specified working order/condition, normally initiated as a result of a scheduled or routine inspection. Generally corrective maintenance consists of rehabilitation of gravity lines, manholes, force mains, etc. and generally in conjunction with system inspection activities. Corrective maintenance also consists of repairing or replacing a failed structure such as a pump station or storage facility.

**Part C:**  
Sanitary Sewer Overflow  
Response Plan (SSORP)

## **Consent Decree Quarterly Report Part C - Sanitary Sewer Overflow Response Plan (SSORP)**

**Requirement:** Pursuant to Paragraph 24, Section X of the Consent Decree, The City/Parish shall implement the Sanitary Sewer Overflow Response Plan (SSO Response Plan) attached to the Consent Decree as Exhibit A.

### **Summary of Activities**

A total of 101 Sanitary Sewer Overflows (SSOs) were responded to during this reporting period. The Sanitary Sewer Overflow Monitoring Report, included as Part D Reporting of Unauthorized Discharges of this Quarterly Report, provides details about these overflows – including the response action taken. The Sanitary Sewer Overflow Response Plan was followed for each unauthorized discharge reported, with the exception of the required written report within 5 days of the event for one unauthorized discharge on February 23, 2004. However, the monthly Sanitary Sewer Overflow Report submitted on March 11, 2004 included this overflow, and the written report for this unauthorized discharge was submitted on April 5, 2004. There were no problems encountered in following the SSO Response Plan. The City/Parish was in compliance with the Collection System Preventive Maintenance Program.

The City/Parish held a meeting to review and discuss Sanitary Sewer Overflow Response Plan (SSORP) procedures. During this meeting, modifications to the overflow response procedure, regulatory agency notification plan, and the general forms were discussed (see attached agenda). We anticipate submitting a request for modification of the SSORP during the next quarter.

<b>Summary of Unauthorized Discharges</b>	<b>Number</b>
North Plant-LA0036439 AI# 4841 Collection System	23
Central Plant-LA0036421 AI # 4842 Collection System	21
South Plant-LA0036412 AI# 4843 Collection System	57
<b>Total</b>	<b>101</b>

\*\* See table attached to Part D – Reporting of Unauthorized Discharges for detailed information about individual events.

The City/Parish  [is]  [is not] in compliance with Section X Sanitary Sewer Overflow Response Plan (SSORP) for the period 1 / 01 / 04 to 3 / 31 / 04. If not, see comments above.

SSO Response Plan  
Revision Workshop Agenda  
March 10, 2004

- Overview & Purpose
- Consent Decree vs. Permit
- Streamlining of Overflow Response Procedures for WWT
- Modify Regulatory Agency Notification/Reporting Procedures
- Modification of Forms
- Are there any Forms that could be Eliminated/Combined?
- Questions or Comments?



**Part D:**  
Reporting of  
Unauthorized Discharges

## **Baton Rouge Consent Decree Quarterly Report Part D - Reporting of Unauthorized Discharges**

**Requirement:** Pursuant to Paragraph 26, Section XI of the Consent Decree the City/Parish shall report all Unauthorized Discharges of which it becomes aware to EPA and LDEQ. All such Unauthorized Discharges shall be reported to EPA and LDEQ in the Quarterly Report.

### **Summary of Unauthorized Discharges**

The attached Sanitary Sewer Overflow Monitoring Report provides information about all unauthorized discharges discovered during the reporting period, such as the date, location, cause, action taken to reduce or eliminate the discharge, surface water which received the discharge and quantity of the discharge. The attached Sanitary Sewer Overflow Monitoring Report also identifies the steps taken to prevent the recurrence of the discharge.

<b>Summary of Unauthorized Discharges</b>	<b>Number</b>
North Plant-LA0036439 AI# 4841 Collection System	23
Central Plant-LA0036421 AI # 4842 Collection System	21
South Plant-LA0036412 AI# 4843 Collection System	57
<b>Total</b>	<b>101</b>

\*\* See attached tables for detailed information about individual events.

Based upon over 50 years of rainfall data, the average rainfall in Baton Rouge for the month of February is 5.2 inches, with a record rainfall of 14.5 inches. The Louisiana Office of State Climatology verified that Baton Rouge received 11.4 inches of rain during the month of February of this year, making it one of the wettest in history. Due to this unusual wet February, thirteen unauthorized discharges greater than 100,000 gallons occurred during this month (see attached correspondence). Two of these discharges were greater than one million gallons.

One unauthorized discharge greater than 100,000 gallons was in the North Wastewater Treatment Plant (NWWTP) service area, three were in the Central Wastewater Treatment Plant (CWWTP) service area and nine, including the two greater than one million gallons, were in the South Wastewater Treatment Plant (SWWTP) service area.

## **Non-Compliance**

There was one incident of non-compliance in the Central Wastewater Treatment Plant service area. The written report for one unauthorized discharge from a collection system manhole was not submitted within 5 days of the incident (see attached correspondence). However all other procedures of the SSO Response Plan were followed, as stated in Part C Sanitary Sewer Overflow Response Plan (SSORP) of this Quarterly Report.

Implementation of the Remedial Measures Action Plan (RMAP) projects will prevent the recurrence of unauthorized discharges due exclusively to wet weather events less than four inches in a 12-hr period.

The City/Parish  [is]  [is not] in compliance with Section XI Reporting of Unauthorized Discharges for the period 1 / 01 / 04 to 3 / 31 / 04. If not, see comments above.

**CITY OF BATON ROUGE/PARISH OF EAST BATON ROUGE  
SANITARY SEWER OVERFLOW MONITORING REPORT  
JANUARY 2004 - MARCH 2004**

NORTH Sewer District Collection System

LPDES\_LA0036439 AI# 4843

1 of 7

Date	Address	Cause	Action	Prevention	Rec. Waters	Amt. Gals	PS	BOD	TSS	pH	
1	1/6/2004	3310 GLENNSADE	OVERFLOW DUE TO STOPPAGE IN MAIN LINE-MH#51-00472	WASHED DOWN AREA, DEODORIZED AND DISINFECTED	CONTINUE PREVENTIVE MAINTENANCE/MONITOR FOR RECURRENCE	COMITE RIVER	60	051-00472	127	186	7.32
2	1/14/2004	8235 GREENWELL SPRINGS	OVERFLOW CAUSED FROM STOPPAGE IN COLLECTION LINE,MH#-55-5008	WASHED DOWN AREA, DEODORIZED AND DISINFECTED.	CONTINUE PREVENTIVE MAINTENANCE/MONITOR FOR RECURRENCE.	N/A	50	055-05008	146	154	7.70
3	1/15/2004	5030 OAKLAN	OVERFLOW CAUSED FROM STOPPAGE IN COLLECTION LINE."CLEAN-OUT"	WASHED DOWN AREA, DEODORIZED AND DISINFECTED.	CONTINUE PREVENTIVE MAINTENANCE/MONITOR FOR RECURRENCE	N/A	50	052-00790	174	156	7.31
4	1/21/2004	9012 ELM GROVE GARDEN	DISCHARGE CAUSED FROM BROKEN SERVICE LINE.	SCHEDULED REPAIR, WASHED DOWN AREA DEODORIZED AND DISINFECTED.	CONTINUE PREVENTIVE MAINTENANCE/MONITOR FOR RECURRENCE.	CYPRESS BAYOU	150	044-00234	130	96	7.06
5	1/28/2004	6754 BUTTONWOOD	OVERFLOW CAUSED FROM STOPPAGE IN COLLECTION LINEMH#47-125	WASHED DOWN AREA, DEODORIZED AND DISINFECTED.	CONTINUE PREVENTIVE MAINTENANCE/MONITOR FOR RECURRENCE	N/A	300	047-00125	197	146	7.35
6	1/30/2004	3912 WYANDOTTE	OVERFLOW CAUSED FROM SURCHARGE CONDITIONS.	WAHED DOWN AREA, DEODORIZED AND DISINFECTED.	IMPLEMENT RMAP PROJECTS	HURRICANE CREEK	58,000	024-00526	43	132	6.84
7	2/5/2004	10228 DUNDEE	OVERFLOW CAUSED FROM SURCHARGE CONDITIONS-MH#255-00005	LINE CLEARED, AREA WASHED DOWN, DEODORIZED & DISINFECTED	IMPLEMENT RMAP PROJECT	COMITE RIVER	11,000	255-00005	34	186	6.89
8	2/5/2004	11085 DEVALL	OVERFLOW CAUSED FROM SURCHARGE CONDITIONS-MH#46-731	WASHED DOWN AREA, DEODORIZED AND DISINFECTED	IMPLEMENT RMAP PROJECT	COMITE RIVER	78,000	046-00731	58	188	6.98
9	2/5/2004	7648 PRESCOTT	OVERFLOW CAUSED FROM SURCHARGE CONDITIONS-MH#52-223	WASHED DOWN AREA, DEODORIZED AND DISINFECTED	IMPLEMENT RMAP PROJECT	HURRICANE CREEK	90,000	052-00233	34	186	6.89
10	2/8/2004	5885 HOOPER	DETERIORATED AIR RELEASE VALVE	WASHED DOWN AREA, DEODORIZED AND DISINFECTED	NONE	COMITE RIVER	200	ARV#897-1	92	160	---
11	2/10/2004	6650 CEDAR GROVE	OVERFLOW CAUSED FROM SURCHARGE SYSTEMMH#47-5551" ABOVE MH	AREA WASHED DOWN, DEODORIZED & DISINFECTED	IMPLEMENT RMAP PROJECT	JONES BAYOU	30,000	047-00555	85	317	6.99
12	2/11/2004	5324 LEMONWOOD	OVERFLOW CAUSED FROM SURCHARGE CONDITIONS.MH#24-207 6" ABOVE MH	WASHED DOWN AREA DEODORIZED AND DISINFECTED.	IMPLEMENT RMAP PROJECT.	MONTE SANO BAYOU	808,000	024-00207	NV	130	6.75
13	2/11/2004	11085 DEVALL	OVERFLOW CAUSED FROM SURCHARGE CONDITIONS-MH#46-00062	WASHED DOWN AREA, DEODORIZED AND DISINFECTED	IMPLEMENT RMAP PROJECT	COMITE RIVER	70,000	046-00062	NV	130	6.75
14	2/12/2004	6165 DALARK	OVERFLOW CAUSED FROM STOPPAGE IN COLLECTION.MH#35-65	WASHED DOWN AREA, DEODORIZED AND DISINFECTED.	CONTINUE PREVENTIVE MAINTENANCE/MONITOR FOR RECURRENCE.	N/A	3,300	035-00065	72	134	6.67
15	3/3/2004	5216 SUMRALL	OVERFLOWING CLEAN-OUT CAUSED FROM STOPPAGE IN COLLECTION LINE.	WASHED DOWN AREA, DEODORIZED AND DISINFECTED.	CONTINUE PREVENTIVE MAINTENANCE/MONITOR FOR RECURRENCE.	N/A	70	052-00556	163	118	7.10

NORTH Sewer District Collection System			LPDES LA0036439 AI# 4843								
Date	Address	Cause	Action	Prevention	Rec. Waters	Amt. Gals	PS	BOD	TSS	pH	
16	3/4/2004	6754 BUTTONWOOD	OVERFLOWING CLEANOUT CAUSED FROM STOPPAGE HOMEOWNERS SERVICE LINE.	WASHED DOWN AREA, DEODORIZED AND DISINFECTED.	CONTINUE PREVENTIVE MAINTENANCE/MONITOR FOR RECURRENCE.	N/A	70	047-00125	158	138	7.00
17	3/4/2004	1930 FAITH	OVERFLOWING MANHOLE CAUSED FROM STOPPAGE IN COLLECTION LINE.-MH205-00023	WASHED DOWN AREA, DEODORIZED AND DISINFECTED.	CONTINUE PREVENTIVE MAINTENANCE/MONITOR FOR RECURRENCE.	N/A	200	205-00023	112	138	6.91
18	3/4/2004	8109 GREENWELL	OVERFLOWING CLEANOUT CAUSED FROM STOPPAGE IN COLLECTION LINE.	WASHED DOWN AREA, DEODORIZED AND DISINFECTED.	CONTINUE PREVENTIVE MAINTENANCE/MONITOR FOR RECURRENCE.	N/A	100	039-00015	158	138	7.00
19	3/9/2004	5021 MCCLELLAND	OVERFLOW FROM CLEANOUT CAUSED FROM STOPPAGE IN HOMEOWNERS SERVICE LINE.	WASHED DOWN AREA, DEODORIZED AND DISINFECTED.	CONTINUE PREVENTIVE MAINTENANCE/MONITOR FOR RECURRENCE.	N/A	200	052-00515	154	133	7.00
20	3/17/2004	2915 TOPAZ	OVERFLOWING MANHOLE CAUSED FROM STOPPAGE IN COLLECTION LINE.MH#49-137	WASHED DOWN AREA, DEODORIZED AND DISINFECTED.	CONTINUE PREVENTIVE MAINTENANCE/MONITOR FOR RECURRENCE	CYPRESS BAYOU	125	049-00137	121	142	7.32
21	3/25/2004	790 MAIN	OVERFLOW CAUSED FROM STOPPAGE IN COLLECTION LINE.-MH#64-19	WASHED DOWN AREA, DEODORIZED AND DISINFECTED.	CONTINUE PREVENTIVE MAINTENANCE/MONITOR FOR RECURRENCE.	CYPRESS BAYOU	100	064-00019	188	230	7.17
22	3/30/2004	860 BLOUNT	OVERFLOW CAUSED FROM BROKEN 6" SERVICE LINE.	WASHED DOWN AREA, DEODORIZED AND DISINFECTED.-CONTRACTED REPAIR FOR BROKEN LINE.	CONTINUE PREVENTIVE MAINTENANCE/MONITOR FOR RECURRENCE.	N/A	400	---	102	162	6.97
23	3/31/2004	5742 SILVERLEAF	OVERFLOW CAUSED FROM STOPPAGE IN COLLECTION LINE.-MH#47-000A	WASHED DOWN AREA, DEODORIZED AND DISINFECTED.	CONTINUE PREVENTIVE MAINTENANCE/MONITOR FOR RECURRENCE.	CYPRESS BAYOU	200	047-000A	108	150	7.05

CENTRAL Sewer District Collection System			LPDES LA0036421 AI# 4842								
Date	Address	Cause	Action	Prevention	Rec. Waters	Amt. Gals	PS	BOD	TSS	pH	
1	1/1/2004	2443 RIVER RD	CRACKED PRIMARY BASINS #1 & #2	BASIN TAKEN OFF-LINE AND PUMPED DOWN	NONE	N/A	4,000	---	---	---	---
2	1/23/2004	3950 CHIPPEWA	OVERFLOW CAUSED FROM STOPPAGE IN COLLECTION LINE.-MH#15-51571	WASHED DOWN AREA, DEODORIZED AND DISINFECTED.	CONTINUE PREVENTIVE MAINTENANCE/MONITOR FOR RECURRENCE.	MISSISSIPPI RIVER	200	015-051571	161	202	7.08
3	2/5/2004	2147 LAKESHORE	OVERFLOW CAUSED FROM HEAVY RAIN MH#10-04903	WASHED DOWN AREA, DEODORIZED AND DISINFECTED.	IMPLEMENT RMAP PROJECTS	UNIVERSITY LAKE	33,000	010-04903	40	168	6.97
4	2/5/2004	3556 LAKESHORE	OVERFLOW DUE TO SURCHARGING CONDITIONS FROM HEAVY RAINFALL.-MH-2-1390D	WASHED DOWN AREA, DEODORIZED AND DISINFECTED	IMPLEMENT RMAP PROJECTS.	UNIVERSITY LAKE	13,000	002-01390D	40	168	6.97
5	2/10/2004	855 HEARTHSTONE	OVERFLOW CAUSED FROM SURCHARGED SYSTEM.-MH#003-01940 5" ABOVE MH	N/A	IMPLEMENT RMAP PROJECT.	WARDS CREEK	170,000	003-01940A	56	206	7.17
6	2/10/2004	2147 LAKESHORE	MANHOLE OVERFLOWED DUE TO HEAVY RAIN EVENT.MH#-010-02810	WASHED DOWN AREA, DEODORIZED & DISINFECTED	IMPLEMENT RMAP PROJECTS	UNIVERSITY LAKE	57,000	010-02810	56	206	7.17

## CENTRAL Sewer District Collection System

LPDES\_LA0036421 AI# 4842

3 of 7

Date	Address	Cause	Action	Prevention	Rec. Waters	Amt. Gals	PS	BOD	TSS	pH	
7	2/10/2004	3556 LAKESHORE	OVERFLOW DUE TO SURCHARGING CONDITIONS FROM HEAVY RAINFALL.-MH-2-1390C	WASHED DOWN AREA, DEODORIZED AND DISINFECTED	IMPLEMENT RMAP PROJECTS.	UNIVERSITY LAKE	24,000	002-01390C	56	206	7.17
8	2/10/2004	3526 LAKESHORE	OVERFLOW CAUSED FROM SURCHARGED CONDITIONS.- MH# 2-1390C	WASHED DOWN AREA, DEODORIZED AND DISINFECTED.	IMPLEMENT RMAP PROJECT.	DAWSON CREEK	18,500	002-01390C	56	206	7.17
9	2/11/2004	3556 LAKESHORE	OVERFLOW DUE TO SURCHARGING CONDITIONS FROM HEAVY RAINFALL.-MH-2-1390C	WASHED DOWN AREA, DEODORIZED AND DISINFECTED	IMPLEMENT RMAP PROJECTS.	UNIVERSITY LAKE	350,000	002-01390C	NV	110	7.18
10	2/11/2004	2147 LAKESHORE	MANHOLE OVERFLOWED DUE TO HEAVY RAIN EVENT.MH#-010-02810	WASHED DOWN AREA, DEODORIZED & DISINFECTED	IMPLEMENT RMAP PROJECTS	UNIVERSITY LAKE	16,000	010-02810	NV	110	7.18
11	2/11/2004	3526 LAKESHORE	OVERFLOW CAUSED FROM SURCHARGED CONDITIONS.- MH# 2-1390B 3" ABOVE MANHOLE	WASHED DOWN AREA, DEODORIZED AND DISINFECTED.	IMPLEMENT RMAP PROJECT.	DAWSON CREEK	14,100	002-01390B	NV	110	7.18
12	2/11/2004	2147 LAKESHORE	MANHOLE OVERFLOWED DUE TO HEAVY RAIN EVENT.MH#-010-02810	WASHED DOWN AREA, DEODORIZED & DISINFECTED	IMPLEMENT RMAP PROJECTS	UNIVERSITY LAKE	58,000	010-02810	NV	110	7.18
13	2/12/2004	2147 LAKESHORE	MANHOLE OVERFLOWED DUE TO HEAVY RAIN EVENT.MH#-010-02810	WASHED DOWN AREA, DEODORIZED & DISINFECTED	IMPLEMENT RMAP PROJECTS	UNIVERSITY LAKE	2,180	010-02810	69	159	6.92
14	2/12/2004	3128 CHIPPEWA	OVERFLOW WAS CAUSED FROM STOPPAGE IN COLLECTION LINE.MH#-60-7623	WASHED DOWN AREA, DEODORIZED AND DISINFECTED.	CONTINUE PREVENTIVE MAINTENANCE/MONITOR FOR RECURRENCE	N/A	2,200	060-07623	69	159	6.92
15	2/12/2004	2171 TULIP	OVERFLOW CAUSED FROM STOPPAGE IN COLLECTION LINE.MH#59-6446	WASHED DOWN AREA, DEODORIZED AND DISINFECTED.	CONTINUE PREVENTIVE MAINTENANCE/MONITOR FOR RECURRENCE	N/A	2,650	059-06446	69	159	6.92
16	2/20/2004	3651 PERKINS	OVERFLOW CAUSED FROM STOPPAGE IN COLLECTION LINE.- MH#5-3918	WASHED DOWN AREA, DEODORIZED AND DISINFECTED.	CONTINUE PREVENTIVE MAINTENANCE/MONITOR FOR RECURRENCE.	WARD CREEK	75	005-03918	110	183	7.14
17	2/23/2004	3556 LAKESHORE	OVERFLOW DUE TO SURCHARGING CONDITIONS FROM HEAVY RAINFALL.-MH-2-1390D	WASHED DOWN AREA, DEODORIZED AND DISINFECTED	IMPLEMENT RMAP PROJECTS.	UNIVERSITY LAKE	102,000	002-01390D	42	352	6.87
18	2/23/2004	2753 HIGHLAND	OVERFLOW CAUSED FROM STOPPAGE IN COLLECTION LINE. MH#001-00200A	WASHED DOWN AREA, DEODORIZED AND DISINFECTED.	CONTINUE PREVENTIVE MAINTENANCE/MONITOR FOR RECURRENCE.	UNIVERSITY LAKE	1,000	001-00200A	42	352	6.87
19	2/25/2004	2596 BARBER	OVERFLOW CAUSED FROM STOPPAGE IN COLLECTION LINE.- MH#5-03871	WASHED DOWN AREA, DEODORIZED AND DISINFECTED.	CONTINUE PREVENTIVE MAINTENANCE/MONITOR FOR RECURRENCE.	DAWSON CREEK	1,630	005-03871	63	177	6.86
20	3/16/2004	1928 3RD	OVERFLOW CAUSED FROM STOPPAGE IN COLLECTION LINE.- MH#19-5257	WASHED DOWN AREA, DEODORIZED AND DISINFECTED.	CONTINUE PREVENTIVEMAINTENANCE/MONITOR FOR RECURRENCE.	MISSISSIPPI RIVER	100	019-05257	106	145	6.99
21	3/31/2004	3001 GREENWOOD	OVERFLOW CAUSED FROM STOPPAGE IN COLLECTION LINE.- MH#5-3933	WASHED DOWN AREA, DEODORIZED AND DISINFECTED.	CONTINUE PREVENTIVE MAINTENANCE/MONITOR FOR RECURRENCE.	UNIVERSITY LAKE	200	005-03933	159	165	7.18

## SOUTH Sewer District Collection System

LPDES\_LA0036412 AI#4841

4 of 7

Date	Address	Cause	Action	Prevention	Rec. Waters	Amt. Gals	PS	BOD	TSS	pH	
1	1/3/2004	14738 LYNBROOK	OVERFLOW CAUSED FROM STOPPAGE IN COLLECTION LINE.-MH#139-37	WASHED DOWN AREA, DEODORIZED AND DISINFECTED.	CONTINUE PREVENTIVE MAINTENANCE/MONITOR FOR RECURRENCE	JONES CREEK	300	139-00037	181	180	6.99
2	1/8/2004	SHERWOOD FOREST	MANHOLE OVERFLOWING DUE TO SURCHARGE CONDITIONS CAUSED BY HEAVY RAIN EVENT	MONITORED AREA, DEODORIZED & DISINFECTED	IMPLEMENT RMAP PROJECTS	JONES CREEK	7,000	050-00526	100	176	7.25
3	1/8/2004	1423 ASHBOURNE	SURCHARGE CONDITIONS DUE TO HEAVY RAINS	MONITORED AREA, DEODORIZED & DISINFECTED	WILL IMPLEMENT RMAP PROJECTS	WARD CREEK	8,000	050-00528	100	176	7.25
4	1/8/2004	1388 ASHBOURNE	MANHOLE OVERFLOWED DUE TO SURCHARGE CONDITIONS CAUSED BY HEAVY RAIN EVENT	MONITORED AREA, DEODORIZED & DISINFECTED	IMPLEMENT RMAP PROJECTS	JONES CREEK	650	050-00530	100	176	7.25
5	1/10/2004	14534 BRETON	OVERFLOW CAUSED FROM PUMP STATION 104 ELECTRICAL FAILURE-MH#104-34	WASHED DOWN AREA, DEODORIZED AND DISINFECTED.	CONTINUE PREVENTIVE MAINTENANCE	AMITE RIVER	700	104-00034	111	128	6.87
6	1/10/2004	14754 JESTER	OVERFLOW CAUSED FROM PUMP STATION #104 ELECTRICAL FAILURE-MH#146-18	WASHED DOWN AREA, DEODORIZED AND DISINFECTED.	CONTINUE PREVENTIVE MAINTENANCE.	AMITE RIVER	700	146-00018	111	128	6.87
7	1/10/2004	14718 JESTER	OVERFLOW CAUSED FROM PUMP STATION #104 ELECTRICAL FAILURE-MH#146-15	WASHED DOWN AREA, DEODORIZED AND DISINFECTED.	CONTINUE PREVENTIVE MAINTENANCE.	AMITE RIVER	700	146-00015	111	128	6.87
8	1/10/2004	14772 JESTER	OVERFLOW CAUSED FROM PUMP STATION #104 ELECTRICAL FAILURE-MH#146-35	WASHED DOWN AREA, DEODORIZED AND DISINFECTED.	CONTINUE PREVENTIVE MAINTENANCE.	AMITE RIVER	700	146-00035	111	128	6.87
9	1/12/2004	864 ALBERT HART	OVERFLOW CAUSED FROM STOPPAGE IN COLLECTION LINE.-MH#57-154	WASHED DOWN AREA, DEODORIZED AND DISINFECTED.	CONTINUE PREVENTIVE MAINTENANCE/MONITOR FOR RECURRENCE	N/A	10	057-00154	124	185	7.03
10	1/13/2004	8100 SIEGEN	DISCHARGE CAUSED FROM BROKEN 10" FORCE-MAIN.	CONTAINED SEWER IN CANAL, PUMPED BACK INTO SYSTEM, DEODORIZED AND DISINFECTED.	NONE	WARDS CREEK	50,000	N/A	130	84	6.55
11	1/16/2004	11196 CHALICE	OVERFLOW CAUSED FROM STOPPAGE IN COLLECTION LINE.-MH#50-407	WASHED DOWN AREA, DEODORIZED AND DISINFECTED.	CONTINUE PREVENTIVE MAINTENANCE/MONITOR FOR RECURRENCE.	JONES CREEK	100	050-00407	170	218	7.28
12	1/18/2004	3139 MARYDON	OVERFLOW CAUSED FROM STOPPAGE IN COLLECTION LINE.-MH#51-266	LINE CLEARED, AREA WASHED DOWN, DEODORIZED & DISINFECTED	CONTINUE PREVENTIVE MAINTENANCE/MONITOR FOR RECURRENCE.	HURRICANE CREEK	25	051-00266	130	272	7.23
13	1/22/2004	2850 GARDERE	POWER OUTAGE	PUMP MECHANIC CALLED STATION POWERE BY GENERATORS	NONE	JONES CREEK	39,000	PS 247	---	---	7.26

## SOUTH Sewer District Collection System

LPDES\_LA0036412 AI#4841

5 of 7

Date	Address	Cause	Action	Prevention	Rec. Waters	Amt. Gals	PS	BOD	TSS	pH	
14	1/22/2004	2134 SERACEDAR	OVERFLOW CAUSED FROM STOPPAGE IN COLLECTION LINE-58-01471	BLOCKED OFF DRAINAGE DITCH,PUMPED SEWER BACK INTO SYSTEM,FLUSH DITCH WITH FRESH WATER-DEODORIZER.	CONTINUE PREVENTIVE MAINTENANCE/MONITOR FOR RECURRENCE,	JONES CREEK	3,000	058-01471	196	180	6.40
15	1/30/2004	11378 ASHBOURNE	MANHOLE OVERFLOWING DUE TO SURCHARGE CONDITIONS CAUSED BY HEAVY RAIN EVENT	MONITORED AREA, DEODORIZED & DISINFECTED	IMPLEMENT RMAP PROJECTS	JONES CREEK	12,600	050-00526	100	176	7.25
16	1/30/2004	1423 ASHBOURNE	SURCHARGE CONDITIONS DUE TO HEAVY RAINS	MONITORED AREA, DEODORIZED & DISINFECTED	WILL IMPLEMENT RMAP PROJECTS	WARD CREEK	13,800	050-00528	78	352	6.98
17	1/30/2004	SHERWOOD FOREST @ ASHBOURNE	MANHOLE OVERFLOWING DUE TO SURCHARGE CONDITIONS CAUSED BY HEAVY RAIN EVENT	MONITORED AREA, DEODORIZED & DISINFECTED	IMPLEMENT RMAP PROJECTS	JONES CREEK	770	050-00530A	78	352	6.98
18	1/30/2004	1388 ASHBOURNE	MANHOLE OVERFLOWED DUE TO SURCHARGE CONDITIONS CAUSED BY HEAVY RAIN EVENT	MONITORED AREA, DEODORIZED & DISINFECTED	IMPLEMENT RMAP PROJECTS	JONES CREEK	870	050-00530	78	352	6.98
19	2/5/2004	1388 ASHBOURNE	MANHOLE OVERFLOWED DUE TO SURCHARGE CONDITIONS CAUSED BY HEAVY RAIN EVENT-MH#50-530	MONITORED AREA, DEODORIZED & DISINFECTED	IMPLEMENT RMAP PROJECTS	JONES CREEK	158,000	050-00530	68	269	7.12
20	2/5/2004	11378 ASHBOURNE	OVERFLOW CAUSED FROM SURCHARGE CONDITIONS.MH#50-526	WASHED DOWN AREA, DEODORIZED AND DISINFECTED.	IMPLEMENT RMAP PROJECT	JONES CREEK	117,000	050-00526	68	269	7.12
21	2/5/2004	SHERWOOD FOREST	MANHOLE OVERFLOWING DUE TO SURCHARGE CONDITIONS CAUSED BY HEAVY RAIN EVENT-MH#50-530A	MONITORED AREA, DEODORIZED & DISINFECTED	IMPLEMENT RMAP PROJECTS	JONES CREEK	45,000	050-00530A	68	269	7.12
22	2/5/2004	1423 ASHBOURNE	SURCHARGE CONDITIONS DUE TO HEAVY RAINS-MH#50-528	MONITORED AREA, DEODORIZED & DISINFECTED	WILL IMPLEMENT RMAP PROJECTS	WARD CREEK	120,000	050-00528	68	269	7.12
23	2/5/2004	4550 CONCORD	OVERFLOW CAUSED FROM SURCHARGE CONDITIONS-MH#91-75AA	WASHED DOWN AREA, DEODORIZED AND DISINFECTED.	IMPLEMENT RMAP PROJECT.	N/A	14,000	091-00075A	68	269	7.12
24	2/6/2004	11421 OLD HAMMOND	OVERFLOW CAUSED FROM SURCHARGE CONDITIONS-MH#58-2655B	WASHED DOWN AREA, DEODORIZED AND DISINFECTED.	IMPLEMENT RMAP PROJECT.	JONES CREEK	11,000	058-02655B	54	196	6.90
25	2/8/2004	13461 TIGER BEND	OVERFLOW CAUSED FROM STOPPAGE IN COLLECTION LINE-MH#201-95	WASHED DOWN AREA, DEODORIZED AND DISINFECTED.	CONTINUE PREVENTIVE MAINTENANCE/MONITOR FOR RECURRENCE	JONES CREEK	3,600	201-00095	111	149	6.93
26	2/9/2004	1110 ARDENWOOD	OVERFLOW DUE TO STOPPAGE IN COLLECTION LINE.MH#-204-11	WASHED DOWN AREA, DEODORIZED AND DISINFECTED	CONTINUE PREVENTIVE MAINTENANCE/MONITOR FOR RECURRENCE	HURRICANE CREEK	200	204-00011	144	168	7.74
27	2/10/2004	5800 ONE PERKINS	OVERFLOW CAUSED FROM STOPPAGE IN COLLECTION LINE-MH#57-5052C 1" ABOVE MANHOLE	WASHED DOWN AREA, DEODORIZED AND DISINFECTED.	CONTINUE PREVENTIVE MAINTENANCE/MONITOR FOR RECURRENCE.	DAWSON CREEK	5,500	057-05052C	88	303	7.14



## SOUTH Sewer District Collection System

LPDES\_LA0036412 AI#4841

6 of 7

Date	Address	Cause	Action	Prevention	Rec. Waters	Amt. Gals	PS	BOD	TSS	pH	
28	2/10/2004	11378 ASHBOURNE	OVERFLOW CAUSED FROM SURCHARGE CONDITIONS.MH#50-526	WASHED DOWN AREA, DEODORIZED AND DISINFECTED.	IMPLEMENT RMAP PROJECT	JONES CREEK	848,000	050-00526	88	303	7.14
29	2/10/2004	1423 ASHBOURNE	SURCHARGE CONDITIONS DUE TO HEAVY RAINS-MH#50-528	MONITORED AREA, DEODORIZED & DISINFECTED	WILL IMPLEMENT RMAP PROJECTS	WARD CREEK	1.04M	050-00528	88	303	7.14
30	2/10/2004	3527 GRANADA	OVERFLOW CAUSED FROM SURCHARGED CONDITIONS.MH#57-00356 1" ABOVE MH	WASHED DOWN AREA, DEODORIZED AND DISINFECTED.	IMPLEMENT RMAP PROJECT	DAWSON CREEK	61,000	057-00356	88	303	7.14
31	2/10/2004	9936 RIDGELY	OVERFLOW CAUSED FROM SURCHARGED SYSTEM-MH#058-00481 1"OVER TOP OF MANHOLE	WASHED DOWN AREA, DEODORIZED AND DISINFECTED.	IMPLEMENT RMAP PROJECT	WARD CREEK	12,000	058-00481	88	303	7.14
32	2/10/2004	SHERWOOD FOREST	MANHOLE OVERFLOWING DUE TO SURCHARGE CONDITIONS CAUSED BY HEAVY RAIN EVENT-MH#50-530A	MONITORED AREA, DEODORIZED & DISINFECTED	IMPLEMENT RMAP PROJECTS	JONES CREEK	64,000	050-00530A	88	303	7.14
33	2/10/2004	1388 ASHBOURNE	MANHOLE OVERFLOWED DUE TO SURCHARGE CONDITIONS CAUSED BY HEAVY RAIN EVENT-MH#50-530	MONITORED AREA, DEODORIZED & DISINFECTED	IMPLEMENT RMAP PROJECTS	JONES CREEK	206,000	050-00530	88	303	7.14
34	2/11/2004	1730 TUDOR	OVERFLOW CAUSED FROM SURCHARGE CONDITIONS.MH#58-784	WASHED DOWN AREA, DEODORIZED AND DISINFECTED.	IMPLEMENT RMAP PROJECT	JONES CREEK	35,000	058-00784	---	---	---
35	2/12/2004	11378 ASHBOURNE	OVERFLOW CAUSED FROM SURCHARGE CONDITIONS.MH#50-526	WASHED DOWN AREA, DEODORIZED AND DISINFECTED.	IMPLEMENT RMAP PROJECT	JONES CREEK	197,000	050-00526	98	174	7.02
36	2/12/2004	1423 ASHBOURNE	SURCHARGE CONDITIONS DUE TO HEAVY RAINS-MH#50-528	MONITORED AREA, DEODORIZED & DISINFECTED	WILL IMPLEMENT RMAP PROJECTS	WARD CREEK	140,000	050-00528	98	174	7.02
37	2/12/2004	1388 ASHBOURNE	MANHOLE OVERFLOWED DUE TO SURCHARGE CONDITIONS CAUSED BY HEAVY RAIN EVENT-MH#50-530	MONITORED AREA, DEODORIZED & DISINFECTED	IMPLEMENT RMAP PROJECTS	JONES CREEK	7,500	050-00530	98	174	7.02
38	2/12/2004	SHERWOOD FOREST	MANHOLE OVERFLOWING DUE TO SURCHARGE CONDITIONS CAUSED BY HEAVY RAIN EVENT-MH#50-530A	MONITORED AREA, DEODORIZED & DISINFECTED	IMPLEMENT RMAP PROJECTS	JONES CREEK	6,500	050-00530A	98	174	7.02
39	2/14/2004	1860 BLVD DE PROVINCE	OVERFLOW CAUSED FROM STOPPAGE IN COLLECTION LINE.-MH#66-81	WASHED DOWN AREA, DEODORIZED AND DISINFECTED.	CONTINUE PREVENTIVE MAINTENANCE/MONITOR FOR RECURRENCE.	JONES CREEK	200	066-00081	75	160	7.15
40	2/18/2004	17321 MEADOW BRYAN	OVERFLOW CAUSED FROM STOPPAGE IN COLLECTION LINE-MH#365-4	WASHED DOWN AREA, DEODORIZED AND DISINFECTED.	CONTINUE PREVENTIVE MAINTENANCE/MONITOR FOR RECURRENCE	N/A	75	365-00004	136	162	7.15
41	2/18/2004	8001 JEFFERSON	OVERFLOW FROM CLEAN-OUT WAS CAUSED FROM STOPPAGE IN COLLECTION LINE-MH58-1183 TO 58-1182	WASHED DOWN AREA, DEODORIZED AND DISINFECTED.	CONTINUE PREVENTIVE MAINTENANCE/MONITOR FOR RECURRENCE.	N/A	100	058-01183	135	204	7.23

## SOUTH Sewer District Collection System

LPDES\_LA0036412 AI#4841

7 of 7

Date	Address	Cause	Action	Prevention	Rec. Waters	Amt. Gals	PS	BOD	TSS	pH	
42	2/20/2004	1650 TUDOR	OVERFLOW CAUSED FROM STOPPAGE IN COLLECTION. MH#58-792	WASHED DOWN AREA, DEODORIZED AND DISINFECTED.	CONTINUE PREVENTIVE MAINTENANCE/MONITOR FOR RECURRENCE.	JONES CREEK	100	058-00792	123	155	7.10
43	2/23/2004	SEVEN PINES	PUMP STATION FAILURE- PS# 111-MH#110-1 PUMP WAS BACK ON LINE AT 9:08A.M.	WASHED DOWN AREA, DEODORIZED AND DISINFECTED.	CONTINUE PREVENTIVE MAINTENANCE.	N/A	70	110-00001	68	308	6.95
44	2/23/2004	4660 FULLER	OVERFLOW CAUSED FROM STOPPAGE IN COLLECTION LINE.MH#95-04000	WASHED DOWN AREA, DEODORIZED AND DISINFECTED.	CONTINUE PREVENTIVE MAINTENANCE/MONITOR FOR RECURRENCE.	N/A	80	095-04000	68	308	6.95
45	2/23/2004	1838 PECK	OVERFLOW CAUSED FROM SURCHARGED CONDITIONS. MH#-12-35 1" ABOVE RING	WASHED DOWN AREA, DEODORIZED AND DISINFECTED.	IMPLEMENT RMAP PROJECT.	N/A	4,900	012-00035	68	308	6.95
46	2/23/2004	764 PLANTATION RIDGE	OVERFLOW CAUSED FROM SURCHARGE CONDITIONS- MH#161-108 6" ABOVE THE RING.	WASHED DOWN AREA, DEODORIZED AND DISINFECTED.	IMPLEMENT RMAP PROJECT	BAYOU FOUNTAIN	88,000	161-00108	68	308	6.95
47	2/23/2004	2850 GARDERE	PUMP FAILURE AT PRIMARY EFFLUENT PUMP STATION CAUSED THE OLD INFLUENT STATION TO OVERFLOW	REPAIRED THE PRIMARY EFFLUENT PUMPS AND RETURNED PUMPS TO SERVICE	NONE	MISSISSIPPI RIVER	2.9M	---	36	68	---
48	2/25/2004	11378 ASHBOURNE	OVERFLOW CAUSED FROM SURCHARGE CONDITIONS.MH#50-526	WASHED DOWN AREA, DEODORIZED AND DISINFECTED.	IMPLEMENT RMAP PROJECT.	JONES CREEK	77,000	050-00526	91	180	6.60
49	2/25/2004	1423 SHERWOOD FOREST	OVERFLOW CAUSED FROM SURCHARGE CONDITIONS.MH-50-528	WASHED DOWN AREA, DEODORIZED AND DISINFECTED.	IMPLEMENT RMAP PROJECT	JONES CREEK	56,500	050-00528	91	180	6.60
50	3/4/2004	3115 JUBAN	OVERFLOWING CLEANOUT CAUSED FROM STOPPAGE IN HOMEOWNERS SERVICE LINE.	WASHED DOWN AREA DEODORIZED AND DISINFECTED.	CONTINUE PREVENTIVE MAINTENANCE/MONITOR FOR RECURRENCE.	N/A	60	049-00228	176	168	7.21
51	3/11/2004	13624 CYPRESS RIDGE	OVERFLOW CAUSED FROM STOPPAGE IN COLLECTION LINE. MH#219-36	WASHED DOWN AREA, DEODORIZED AND DISINFECTED.	CONTINUE PREVENTIVE MAINTENANCE/MONITOR FOR RECURRENCE.	CLAYCUT BAYOU	200	219-00036	144	174	7.35
52	3/11/2004	1976 SOUTHLAND	OVERFLOW CAUSED FROM STOPPAGE IN COLLECTION LINE- MH#66-7	WASHED DOWN AREA, DEODORIZED AND DISINFECTED.	CONTINUE PREVENTIVE MAINTENANCE/MONITOR FOR RECURRENCE.	N/A	300	066-00007	144	148	7.25
53	3/18/2004	1919 STARING	OVERFLOW CAUSED FROM STOPPAGE-MH#57-5035	WASHED DOWN AREA, DEODORIZED AND DISINFECTED.	CONTINUE PREVENTIVE MAINTENANCE/MONITOR FOR RECURRENCE.	N/A	50	057-05035	144	233	6.99
54	3/22/2004	1170 MAGNOLIA WOOD	OVERFLOW CAUSED FROM STOPPAGE IN COLLECTION- MH#57-5001	LINE CLEARED, AREA WASHED DOWN, DEODORIZED & DISINFECTED	WILL CONTINUE PREVENTATIVE MAINTENANCE & MONITOR FOR RECURRENCE	DAWSON CREEK	500	057-05001	132	150	7.37
55	3/23/2004	11200 INDUSTRIPLEX	OVERFLOW CAUSED FROM STOPPAGE IN COLLECTION LINE- MH#287-28	WASHED DOWN AREA, DEODORIZED AND DISINFECTED.	CONTINUE PREVENTIVE MAINTENANCE/MONITOR FOR RECURRENCE.	CLAYCUT BAYOU	300	287-00028	180	182	7.12
56	3/24/2004	7000 OLD HAMMOND	OVERFLOW CAUSED FROM STOPPAGE IN COLLECTION LINE.- MH#58-1948	WASHED DOWN AREA, DEODORIZED AND DISINFECTED.	CONTINUE PREVENTIVE MAINTENANCE/MONITOR FOR RECURRENCE.	JONES CREEK	50	058-01948	166	166	6.92
57	3/30/2004	16631 STEPHANIE	OVERFLOW CAUSED FROM STOPPAGE IN COLLECTION LINE.- MH#145-35	WASHED DOWN AREA, DEODORIZED AND DISINFECTED.	CONTINUE PREVENTIVE MAINTENANCE/MONITOR FOR RECURRENCE.	COMITE RIVER	200	145-00035	192	171	7.10



## Department of Public Works

Wastewater Collection Division

City of Baton Rouge  
Parish of East Baton Rouge  
Post Office Box 1471  
Baton Rouge, Louisiana  
70821

February 9, 2004

U. S. Environmental Protection Agency  
Compliance Assurance and Enforcement Division  
Water Enforcement Branch (6EN-W)  
1445 Ross Avenue  
Dallas, Texas 75202-2733

Attention: Vivian Hare

Re: LPDES Permit No. LA0036412 AI#4841  
PS 50 Area Overflows

Dear Ms. Hare:

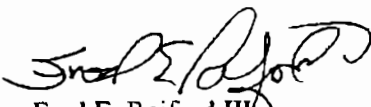
This letter is to inform you of three overflows, which occurred in the PS 50 area from approximately 7:30 p.m. on February 5, 2004 to 12:30 a.m. on February 6. During this time, an estimated 395,000 gallons of untreated sewage was released to Jones Creek. The following is a list of overflow quantities from specific overflow locations:

<u>Manhole #</u>	<u>Address</u>	<u>Quantity (gallons)</u>
050-00530	1388 Ashbourne	158,000
050-00528	1423 Ashbourne	120,000
050-00526	11378 Ashbourne	117,000

The overflows were due to a heavy rainfall event which consisted of two to four inches of rain. Remedial measures action plan (RMAP) projects are being implemented to prevent recurrence of similar future overflows in this area due to wet-weather events. Procedures outlined in the SSO Response Plan were followed during the incident.

Should you require additional information concerning this matter, please let me know.

Sincerely yours,



Fred E. Raiford III  
Director of Public Works

FER/RG/pas

xc: Jerome M. Klier, Deputy Director of Public Works  
Kent Mudd, Special Projects Engineer  
Rick Wright, P.E.  
Robert Groht, Jr., Wastewater Treatment Plant Manager  
David Ratcliff, Wastewater Collection Systems Manager  
Michael Ponder, Parish Attorney  
Bill McHie, MWH



**Department of Public Works**

Wastewater Collection Division

City of Baton Rouge  
Parish of East Baton Rouge  
Post Office Box 1471  
Baton Rouge, Louisiana  
70821

February 16, 2004

U. S. Environmental Protection Agency  
Compliance Assurance and Enforcement Division  
Water Enforcement Branch (6EN-W)  
1445 Ross Avenue  
Dallas, Texas 75202-2733

Attention: Vivian Hare

Re: LPDES Permit No. LA0036421 AI#4842  
855 Hearthstone Overflow - PS 3 Area

Dear Ms. Hare:

This letter is to inform you of an overflow at 3556 Lakeshore (Manhole 002-01390C), which occurred from approximately 9:00 a.m. to 4:00 p.m. on February 10, 2004. During this time, an estimated 170,000 gallons of untreated sewage was released to Dawson's Creek.

The overflow was due to a heavy rainfall event, which consisted of approximately three and a half inches of rain over a two day period. To compound the impact of the storm, the ground was already saturated from a large wet weather event the previous week. Remedial measures action plan (RMAP) projects are being implemented to prevent recurrence of similar future overflows in this area due to wet-weather events. Procedures outlined in the SSO Response Plan were followed during the incident.

Should you require additional information concerning this matter, please let me know.

Sincerely yours,

Fred E. Raiford III  
Director of Public Works

FER/RG/pas

xc: Jerome M. Klier, Deputy Director of Public Works  
Kent Mudd, Special Projects Engineer  
Rick Wright, P.E.  
Robert Groht, Jr., Wastewater Treatment Plant Manager  
David Ratcliff, Wastewater Collection Systems Manager  
Michael Ponder, Parish Attorney  
Bill McHie, MWH



## Department of Public Works

Wastewater Collection Division

City of Baton Rouge  
Parish of East Baton Rouge  
Post Office Box 1471  
Baton Rouge, Louisiana  
70821

February 16, 2004

U. S. Environmental Protection Agency  
Compliance Assurance and Enforcement Division  
Water Enforcement Branch (6EN-W)  
1445 Ross Avenue  
Dallas, Texas 75202-2733

Attention: Vivian Hare

Re: LPDES Permit No. LA0036421 AI#4842  
3556 Lakeshore Overflow - PS 2 Area

Dear Ms. Hare:

This letter is to inform you of an overflow at 3556 Lakeshore (Manhole 002-01390C), which occurred from approximately 12:00 a.m., February 11, 2004 to 10:00 a.m., February 12. During this time, an estimated 350,000 gallons of untreated sewage was released to University Lake.

The overflow was due to a heavy rainfall event, which consisted of approximately three and a half inches of rain over a two day period. To compound the impact of the storm, the ground was already saturated from a large wet weather event the previous week. Remedial measures action plan (RMAP) projects are being implemented to prevent recurrence of similar future overflows in this area due to wet-weather events. Procedures outlined in the SSO Response Plan were followed during the incident.

Should you require additional information concerning this matter, please let me know.

Sincerely yours,

Fred E. Raiford II  
Director of Public Works

FER/RG/pas

xc: Jerome M. Klier, Deputy Director of Public Works  
Kent Mudd, Special Projects Engineer  
Rick Wright, P.E.  
Robert Groht, Jr., Wastewater Treatment Plant Manager  
David Ratcliff, Wastewater Collection Systems Manager  
Michael Ponder, Parish Attorney  
Bill McHie, MWH



## Department of Public Works

Wastewater Collection Division

City of Baton Rouge  
Parish of East Baton Rouge  
Post Office Box 1471  
Baton Rouge, Louisiana  
70821

February 16, 2004

U. S. Environmental Protection Agency  
Compliance Assurance and Enforcement Division  
Water Enforcement Branch (6EN-W)  
1445 Ross Avenue  
Dallas, Texas 75202-2733

Attention: Vivian Hare

Re: LPDES Permit No. LA0036439 AI#4843  
5324 Lemonwood Overflow - PS 24 Area

Dear Ms. Hare:

This letter is to inform you of an overflow at 5324 Lemonwood (Manhole 024-00207), which occurred from approximately 11:45 a.m., February 11, 2004 to 1:00 p.m., February 12. During this time, an estimated 808,000 gallons of untreated sewage was released to Monte Sano Bayou.

The overflow was due to a heavy rainfall event, which consisted of approximately three and a half inches of rain over a two day period. To compound the impact of the storm, the ground was already saturated from a large wet weather event the previous week. Remedial measures action plan (RMAP) projects are being implemented to prevent recurrence of similar future overflows in this area due to wet-weather events. Procedures outlined in the SSO Response Plan were followed during the incident.

Should you require additional information concerning this matter, please let me know.

Sincerely yours,

Fred E. Raiford III  
Director of Public Works

FER/RG/pas

xc: Jerome M. Klier, Deputy Director of Public Works  
Kent Mudd, Special Projects Engineer  
Rick Wright, P.E.  
Robert Groht, Jr., Wastewater Treatment Plant Manager  
David Ratcliff, Wastewater Collection Systems Manager  
Michael Ponder, Parish Attorney  
Bill McHie, MWH



Department of Public Works

Wastewater Collection Division

City of Baton Rouge
Parish of East Baton Rouge
Post Office Box 1471
Baton Rouge, Louisiana
70821

February 16, 2004

U. S. Environmental Protection Agency
Compliance Assurance and Enforcement Division
Water Enforcement Branch (6EN-W)
1445 Ross Avenue
Dallas, Texas 75202-2733

Attention: Vivian Hare

Re: LPDES Permit No. LA0036412 AI#4841
PS 50 Area Overflows

Dear Ms. Hare:

This letter is to inform you of five overflows which occurred from three manholes in the PS 50 area between February 10 and February 12, 2004. During this time, an estimated total of 2,430,000 gallons of untreated sewage was released to Jones Creek. The following is a list of overflow quantities from specific overflow locations at specific times:

Table with 5 columns: Manhole #, Begin Time, End Time, Address, Quantity (gallons). Rows include manholes 050-00530, 050-00528, 050-00528, 050-00526, and 050-00526 with their respective overflow times and quantities.

The overflows were due to a heavy rainfall event which consisted of approximately three and a half inches of rain over a two day period. To compound the impact of the storm, the ground was already saturated from a large wet weather event the previous week. Remedial measures action plan (RMAP) projects are being implemented to prevent recurrence of similar future overflows in this area due to wet-weather events. Procedures outlined in the SSO Response Plan were followed during the incident.

Should you require additional information concerning this matter, please let me know.

Sincerely yours,

Handwritten signature of Fred E. Raiford III

Fred E. Raiford III
Director of Public Works

FER/RG/pas

- xc: Jerome M. Klier, Deputy Director of Public Works
Kent Mudd, Special Projects Engineer
Rick Wright, P.E.
Robert Groht, Jr., Wastewater Treatment Plant Manager
David Ratcliff, Wastewater Collection Systems Manager
Michael Ponder, Parish Attorney
Bill McHie, MWH



## Department of Public Works

City of Baton Rouge  
Parish of East Baton Rouge

Post Office Box 1471  
Baton Rouge, Louisiana  
70821

February 26, 2004

U. S. Environmental Protection Agency  
Compliance Assurance and Enforcement Division  
Water Enforcement Branch (6EN-W)  
1445 Ross Avenue  
Dallas, Texas 75202-2733

Attention: Vivian Hare

Re: LPDES Permit No. LA0036412 AI# 4841  
South Wastewater Treatment Plant Overflow

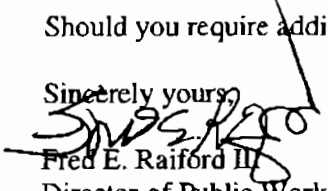
Dear Ms. Hare:

This letter is to provide information about an overflow at the South Wastewater Treatment Plant, which occurred from 6:00 p.m. to 7:10 p.m. on February 23, 2004. During this time, an estimated 2,900,000 gallons received primary treatment before overflowing from the old effluent pump station wet well onto the ground.

This overflow occurred due to a pump failure at the primary effluent pump station at the plant. While the pumps were down, flows from the primary basins were allowed to overflow into the old effluent pump station wet well for storage. However, due to extreme wet weather conditions, the wet well filled up quickly and overflowed approximately 2,900,000 gallons. Repairs were made to the primary effluent pumps as quickly as possible, and the pumps were returned to normal operation and the overflow ceased. Procedures outlined in the Sanitary Sewer Response Plan were followed during the incident.

Should you require additional information concerning this matter, please let me know.

Sincerely yours,

  
Fred E. Raiford II  
Director of Public Works

FER/RG/pas

xc: Jerome M. Klier, Deputy Director of Public Works  
Kent Mudd, Special Projects Engineer  
Rick Wright, P.E.  
Robert Groht, Jr., Wastewater Treatment Plant Manager  
David Ratcliff, Wastewater Collection Systems Manager  
Michael Ponder, Parish Attorney  
Bill McHie, MWH





**Department of Public Works**

Wastewater Collection Division

City of Baton Rouge  
Parish of East Baton Rouge  
Post Office Box 1471  
Baton Rouge, Louisiana  
70821

April 5, 2004

U. S. Environmental Protection Agency  
Compliance Assurance and Enforcement Division  
Water Enforcement Branch (6EN-W)  
1445 Ross Avenue  
Dallas, Texas 75202-2733

Attention: Vivian Hare

Re: LPDES Permit No. LA0036421 AI#4842  
3556 Lakeshore Overflow - PS 2 Area

Dear Ms. Hare:

This letter is to inform you of an overflow at 3556 Lakeshore (Manhole 002-01390D), which occurred from approximately 7:30 a.m. to 4:30 p.m. on February 23, 2004. During this time, an estimated 102,000 gallons of untreated sewage was released to University Lake.

The overflow was due to a heavy rainfall event in the area. Remedial measures action plan (RMAP) projects are being implemented to prevent recurrence of similar future overflows in this area due to wet-weather events. Procedures outlined in the SSO Response Plan were followed during the incident.

Should you require additional information concerning this matter, please let me know.

Sincerely yours,

  
Fred E. Raiford III  
Director of Public Works

FER/DR/swn

xc: Jerome M. Klier, Deputy Director of Public Works  
Kent Mudd, Special Projects Engineer  
Rick Wright, P.E.  
Robert Groht, Jr., Wastewater Treatment Plant Manager  
David Ratcliff, Wastewater Collection Systems Manager  
Michael Ponder, Parish Attorney  
Bill McHie, MWH

**Part E:**  
Supplemental Environmental  
Projects (SEPs)

## **Baton Rouge Consent Decree Quarterly Report Part E - Supplemental Environmental Projects (SEPs)**

**Requirement:** Pursuant to Section XX, Paragraph 60 of the Consent Decree, the City/Parish shall conduct Supplemental Environmental Projects (SEPs) in accordance with the SEP Plan Requirements. The SEPs will be completed in accordance with the schedule specified in the SEP Plan Requirement. Pursuant to Paragraph 61 of the Consent Decree, the City/Parish shall spend no less than \$1,125,000 on the SEPs. Pursuant to Paragraph 62 of the Consent Decree, the City/Parish shall complete the SEPs in accordance with the milestones contained in the SEP Plan Requirements and submit a SEP Completion Report no later than September 15, 2004.

### **Summary**

The City/Parish estimates that when the SEPs are completed approximately 750 residences will have their effluent treated at a wastewater treatment plant and discharged into the Mississippi River. Cypress Bayou, Lively Bayou, Claycut Bayou and the Amite and Comite Rivers will avoid untreated sewer discharges from these 750 residences.

The Notice to Proceed has been issued for all SEP projects, and construction is complete or underway for all SEP projects. We anticipate that all SEP projects will be completed ahead of the schedule contained in the SEP Plan Requirements. We do not anticipate any noncompliance.

The following are the Supplemental Environmental Projects (SEPs):

1. Donwood/Oak Manor Project
2. Pleasant Hills (Section 3)/Green Acres Project
3. Sharon Hills/Cedar Glen/Pleasant Hills Project
4. Stumberg Lane Project

### **Summary of Activities**

The Donwood/Oak Manor Project construction was completed on September 4, 2003, 190 days prior to the Consent Decree construction completion milestone. The Metropolitan Council issued the Certificate of Final Acceptance on October 22, 2003. The City/Parish distributed a letter to area property owners informing them of their obligation to abandon their septic tank, back fill it with sand and make sure their service line is properly connected to the City-Parish collection line within six months following the official notification letter (see attached correspondence). The area property owners can choose to perform the work themselves or contract a licensed plumber of their choosing.

A Notice To Proceed was issued for the Pleasant Hills (Section 3)/Green Acres and the Sharon Hills/Cedar Glen/Pleasant Hills Projects on September 24, 2003. Construction for the Pleasant Hills (Section 3)/Green Project is anticipated to be complete by June 1, 2004, 13 days prior to the Consent Decree construction completion milestone. Construction for the Sharon Hills/Cedar

**Part E – Supplemental Environmental Projects (SEPs)**

Glen/Pleasant Hills Project is anticipated to be complete by August 1, 2004, 13 days prior to the Consent Decree construction completion milestone.

The Stumberg Lane Project construction was completed on September 15, 2003, 181 days prior to the Consent Decree construction completion milestone. The Metropolitan Council issued the Certificate of Final Acceptance on November 25, 2003. The City/Parish distributed a letter to area property owners informing them of their obligation to abandon their septic tank, back fill it with sand and make sure their service line is properly connected to the City-Parish collection line within six months following the official notification letter (see attached correspondence). The area property owners can choose to perform the work themselves or contract a licensed plumber of their choosing.

**Status of Supplemental Environmental Projects (SEPs)**

Proj. No.	Design Status	Construction Start Date			Construction Completion Date		Construction % Complete	Construction Cost	
		Sched.	Advertised	NTP	CD Sched.	Anticipated / Completion		CD Estimate	Contract Amount
1	100%	03/14/03	02/21/03	04/28/03	03/14/04	09/04/03	100%	\$ 125,000	\$ 265,595
2	100%	06/14/03	06/27/03	09/24/03	06/14/04	06/01/04	50%	\$ 250,000	\$ 749,103
3	100%	06/14/03	06/27/03	09/24/03	08/14/04	08/01/04	30%	\$ 650,000	
4	100%	03/14/03	03/28/03	06/18/03	03/14/04	09/15/03	100%	\$ 100,000	\$ 80,367
Total								\$1,125,000	\$1,094,660

1. Donwood/Oak Manor Project
2. Pleasant Hills (Section 3)/Green Acres Project
3. Sharon Hills/Cedar Glen/Pleasant Hills Project
4. Stumberg Lane Project

The City/Parish  [is]  [is not] in compliance with Section XX Supplemental Environmental Projects for the period 01 / 01 / 04 to 03 / 31 / 04. If not, see comments above.



**Department of Public Works**  
Wastewater Collection Division

City of Baton Rouge  
Parish of East Baton Rouge  
Post Office Box 1471  
Baton Rouge, Louisiana  
70821

January 8, 2004

Dear Property Owner:

The City of Baton Rouge/Parish of East Baton Rouge entered into a Consent Decree with the U. S. Environmental Protection Agency and the La. Department of Environmental Quality relating to improving the sanitary sewer system. The Donwood/Oak Manor and Stumberg Lane Supplemental Environmental Projects were included in the Consent Decree in order to reduce the fine amount and to spend funds on projects that benefit public health and the environment.

The City-Parish contractor, Allen & LeBlanc LLC., constructed new pump stations and sewer lines that redirected sewage effluent that previously discharged into neighborhood canals but is now being directed to the South Wastewater Treatment Plant before being discharged into the Mississippi River. The City-Parish portion of the project was accepted by the Metropolitan Council as being complete on October 22, 2003.

Many of you were able to attend the public hearing on this project held at the Eastside Fire Department on May 29, 2003. At that meeting it was explained that, in accordance with the Parish Code, all property owners would have six months from the date of this official notification letter to abandon their septic tank, back fill it with sand and make sure their service line is properly connected to the City-Parish collection line. (See attached detail) Any homeowners with modads, rather than septic tanks, do not have to take any action as long as their modad is functioning properly, the filter bed has been properly bypassed, and the modad is properly connected to the City-Parish collection line. All modad current and future maintenance and operating costs are the responsibility of the homeowner, and all residences with modads will be billed the monthly sewer user fee.

In an effort to assist property owners, the City-Parish obtained price quotes from licensed plumbers for the various tasks involved in this project. The price quotes are attached for your information, but I want to stress that you are under no obligation to use any of the plumbers listed. You can choose to perform the work yourself, or you are free to contract with any licensed plumber of your choosing at whatever price you agree on. The attached price quotes are only furnished to assist you.

All property owners, or their licensed plumbers, must obtain a no cost Septic Tank Abandonment Permit from the City-Parish Wastewater Collection Division to perform this work. The Wastewater Collection Division can be contacted at 389-4858. They are located on the second floor at 345 Chippewa Street.

Beginning in February, the responsible party will be charged a monthly sewer user fee. This fee is calculated based on your average water consumption for the months of October 2002 - December 2002 and February 2003 - April 2003. The sewer user fee is recalculated July first of each year. In July 2004 your monthly sewer user fee will be recalculated based on your average water consumption in the months of October 2003 - December 2003 and February 2004 - April 2004. If you have any billing questions, you may contact the Service Fee Business Office at 389-5378.

I understand that this project will be a financial hardship for some property owners. The City-Parish Office of Community Development may be able to provide financial assistance to some property owners who meet low-income eligibility guidelines. They can be contacted at 389-3039.

If you received this letter, and you are not the property owner at the address the letter was sent to, please forward this letter on to the property owner.

Thank you for your cooperation with this project. When it is completed, you will benefit from cleaner canals, the elimination of septic tank maintenance and hopefully increased property values.

  
David Ratcliff  
Wastewater Collection Manager

**Part F:**  
Consent Decree  
Compliance Status

## Consent Decree Quarterly Report Part F - Consent Decree Compliance Status

**Requirement:** Pursuant to Exhibit I of the Consent Decree, the City/Parish shall report Consent Decree compliance status in each quarterly report and provide a brief narrative summary of non-compliance items and any other information required to convey activity status as it relates to compliance or non-compliance with the Consent Decree.

### Compliance Status

1. The City/Parish was not in compliance with the North Treatment Plant LPDES Permit No. LA0036439 AI# 4843 during the reporting period. The North Wastewater Treatment Plant (NWWTP) exceeded the permit effluent limits for the monthly average of BOD (mg/l) and 75% removal of BOD, for the periods shown in the table below. The total amount of stipulated penalties identified for non-compliant activities at the North Plant during this reporting period is \$5,000. Noncompliance is not anticipated during subsequent reporting periods.

NWWTP	Permit Level	1 <sup>st</sup> Quarter 2004			Stipulated Penalty		
		Jan.	Feb.	Mar.	# of Occurrences	Per Occurrence	Total
<b><u>BOD</u></b>							
7-Day Avg. (mg/l)	45	C	C	C			
Monthly Avg. (mg/l)	30	32	C	C	1	\$2,500	\$2,500
Monthly Avg. (lbs/day)	13,511	C	C	C			
Percent Removal	75%	74	C	C	1	\$2,500	\$2,500
<b><u>TSS</u></b>							
7-Day Avg. (mg/l)	45	C	C	C			
Monthly Avg. (mg/l)	30	C	C	C			
Monthly Avg. (lbs/day)	13,511	C	C	C			
Percent Removal	75%	C	C	C			
<b><u>TRC</u></b>							
Daily Avg (mg/l)	0.46	C	C	C			
<b><u>Fecal Coliform</u></b>							
7-Day Avg. (mg/l)	400 col/100ml	C	C	C			
Monthly Avg. (mg/l)	200 col/100ml	C	C	C			
<b>Total</b>							<b>\$5,000</b>

C-Compliance

## Part F - Consent Decree Compliance Status

2. The City/Parish was not in compliance with the Central Treatment Plant LPDES Permit No. LA0036421 AI# 4842 during the reporting period. The Central Wastewater Treatment Plant (CWWTP) monthly removal discharge limit of 75% of BOD was not reached for the period shown in the table below. The total amount of stipulated penalties identified for non-compliant activities at the Central Plant during this reporting period is \$2,500. Noncompliance is not anticipated during subsequent reporting periods.

CWWTP	Permit Level	1 <sup>st</sup> Quarter 2004			Stipulated Penalty		
		Jan.	Feb.	Mar.	# of Occurrences	Per Occurrence	Total
<b><u>BOD</u></b>							
7-Day Avg. (mg/l)	45	C	C	C			
Monthly Avg. (mg/l)	30	C	C	C			
Monthly Avg. (lbs/day)	7,906	C	C	C			
Percent Removal	75%	C	C	C			
<b><u>TSS</u></b>							
7-Day Avg. (mg/l)	45	C	C	C			
Monthly Avg. (mg/l)	30	C	C	C			
Monthly Avg. (lbs/day)	7,906	C	C	C			
Percent Removal	75%	C	70	C	1	\$2,500	\$2,500
<b><u>TRC</u></b>							
Daily Avg (mg/l)	0.78	C	C	C			
<b><u>Fecal Coliform</u></b>							
7-Day Avg. (mg/l)	400 col/100ml	C	C	C			
Monthly Avg. (mg/l)	200 col/100ml	C	C	C			
						<b>Total</b>	<b>\$2,500</b>

### C-Compliance

3. The City/Parish was not in compliance with the South Treatment Plant LPDES Permit No. LA0036412 AI# 4841 during the reporting period. The South Wastewater Treatment Plant (SWWTP) exceeded the permit effluent limits for the weekly average of BOD (mg/l), monthly average for BOD & TSS (mg/l) and 75% removal of BOD, for the periods shown in the table below. The total amount of stipulated penalties identified for non-compliant activities at the South Plant during this reporting period is \$19,000. Noncompliance was due to operational issues at the South Wastewater Treatment Plant.

However, the SWWTP did achieve a major accomplishment this reporting period. The plant was still experiencing operational difficulties during January and February of this year related to snail infestation and failure at four of the eight trickling filter distributor arms. The trickling filter work has exceeded the City/Parish's initial project completion date due to the contractor having difficulty meeting certain project specification requirements, but the new distributor arms for trickling filters No. 5 & 7 and trickling filters No. 6 & 8 were successfully installed during this reporting period. Trickling filters No. 5 & 7 completed start-up in early March and trickling filters No. 6 & 8 will complete start-up in April. The snail screens have been installed and it is anticipated the piping for the screens will be



## Part F - Consent Decree Compliance Status

completed in April. Once trickling filters No. 5 & 7 began functioning properly, the SWWTP began operating within permit limits, as shown in the table below. The City/Parish no longer anticipates non-compliance at the SWWTP.

SWWTP	Permit Level	1 <sup>st</sup> Quarter 2004			Stipulated Penalty		
		Jan.	Feb.	Mar.	# of Occurrences	Per Occurrence	Total
<b>BOD</b>							
7-Day Avg. (mg/l)	45	46	53	C	2	\$1,000	\$2,000
		52			1	\$1,000	\$1,000
		52			1	\$1,000	\$1,000
Monthly Avg. (mg/l)	30	50	36	C	2	\$2,500	\$5,000
Monthly Avg. (lbs/day)	13,511	C	14,633	C	1	\$2,500	\$2,500
Percent Removal	75%	67	66	C	2	\$2,500	\$5,000
<b>TSS</b>							
7-Day Avg. (mg/l)	45	C	C	C			
Monthly Avg. (mg/l)	30	37	C	C	1	\$2,500	\$2,500
Monthly Avg. (lbs/day)	13,511	C	C	C			
Percent Removal	75%	C	C	C			
<b>TRC</b>							
Daily Avg (mg/l)	0.46	C	C	C			
<b>Fecal Coliform</b>							
7-Day Avg. (mg/l)	400 col/100ml	C	C	C			
Monthly Avg. (mg/l)	200 col/100ml	C	C	C			
<b>Total</b>							<b>\$19,000</b>

C-Compliance

- Two unauthorized discharges occurred in the South Wastewater Treatment Plant (SWWTP) area and resulted in the release of more than one million gallons during the entire duration, as noted in Part D Reporting of Unauthorized Discharges. The stipulated penalty identified for this non-compliant activity in the SWWTP area is \$10,000 for the periods shown in the table below.

<u>Unauthorized Discharges</u> ( >1M gal.)	1 <sup>st</sup> Quarter 2004			Stipulated Penalty			
	Jan.	Feb.	Mar.	# of Occurrences	Per Occurrence	Total	
North Plant-LA0036439	C	C	C				
Central Plant-LA0036421	C	C	C				
South Plant-LA0036412	C	1.04M	C	1	\$5,000	\$5,000	
	C	2.9M	C	1	\$5,000	\$5,000	
<b>Total</b>							<b>\$10,000</b>

C-Compliance

## Part F - Consent Decree Compliance Status

5. The Sanitary Sewer Overflow Response Plan (SSORP) was followed for each unauthorized discharge reported during this quarter, with the exception of the required written report within 5 days of the event, for one unauthorized discharges on February 23, 2004. The written report for this unauthorized discharge was inadvertently not submitted in a timely manner, for the period shown in the table below. The City/Parish was in compliance with the Collection System Preventive Maintenance Program Plan and all other procedures of the SSORP were followed in responding to and mitigating the impact of these discharges.

<b>Unauthorized Discharges</b> ( < 1M gal. non-compliant)	<b>1<sup>st</sup> Quarter 2004</b>			<b>Stipulated Penalty</b>		
	<u>Jan.</u>	<u>Feb.</u>	<u>Mar.</u>	<u># of Occurrences</u>	<u>Per Occurrence</u>	<u>Total</u>
North Plant-LA0036439	C	C	C			
Central Plant-LA0036421	C	1	C	1	\$5,000	\$5,000
South Plant-LA0036412	C	C	C			
<b>Total</b>						<b>\$5,000</b>

C-Compliance

### Summary of Activities

1. The permit application to LDEQ for the Ballasted Flocculation Treatment System was submitted on January 23, 2004 (see attached correspondence).
2. The sixth, final quarterly Phase I Water Quality Baseline Monitoring event was conducted on February 6, 2004 (see attached correspondence).
3. The installation of new distributor arms for trickling filters No. 5 & No. 7 at the South WWTP was completed on February 9, 2004 (see attached correspondence) and the start up period ended on March 1, 2004.
4. Equipment for the Ballasted Flocculation Unit pilot testing program was mobilized to the SWWTP on March 1, 2004 (see attached photographs) and initial testing began on March 8, 2004.
5. A request for modifications to both Remedial Measures Action Plan (RMAP) No. 1 & 2 was submitted on March 11, 2004 (see attached correspondence).
6. The installation of new distributor arms for trickling filters No. 6 & No. 8 at the South WWTP was completed on March 15, 2004 and the start up period will end during the next quarter.
7. The snail screens at the SWWTP were installed.
8. The SSO Program Guidelines for Design Consultants, SSO Program Guidelines for Environmental Site Assessments, SSO Program Guidelines for Subsurface Investigations were issued in March (see attached cover sheets).

The City/Parish  [is]  [is not] in full compliance with Consent Decree for the period 1 / 01 / 04 to 3 / 31 / 04. If not, see comments above.



## Department of Public Works

City of Baton Rouge  
Parish of East Baton Rouge

Post Office Box 1471  
Baton Rouge, Louisiana  
70821

January 23, 2004

Department of Environmental Quality  
Office of Water Resources  
Post Office Box 82215  
Baton Rouge, Louisiana 70884-2215

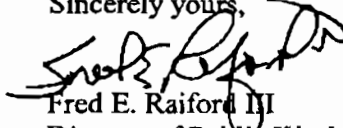
Attention: Application Verification Unit

**Re: City of Baton Rouge/Parish of East Baton Rouge  
South Wastewater Treatment Plant -- LA0036412 AI#4841  
LPDES Permit Application**

Enclosed please find the Louisiana Pollutant Discharge Elimination System (LPDES) permit application for the referenced facility owned and operated by the City of Baton Rouge/Parish of East Baton Rouge (City/Parish). As part of this application, the City/Parish respectfully requests the modification of the existing permit to include the use of a ballasted flocculation treatment unit as a means to treat excess wet weather flows. It is the intent of the City/Parish to use the ballasted flocculation unit whenever flows at the wastewater treatment plant exceed the existing treatment plant capacity. The City/Parish is in the process of implementing a pilot test study with the U.S. Army Corps of Engineers in order to collect operating and design data for treatment facilities to support the attached LPDES permit application. This supporting data should be available later this year.

This permit modification is necessary to complete the design and construction of facilities identified in the Baton Rouge 2001 EPA/DEQ Consent Decree as part of Remedial Measures Action Plan (RMAP) No. 2. Therefore, we respectfully request your timely review of this request for modifications to the existing permit. Should you have any questions concerning this matter, please contact me at (225) 389-3158 or Mr. Robert Groht at (225) 389-3240.

Sincerely yours,



Fred E. Raiford III  
Director of Public Works

FER/swn  
Enclosure

cc: The Honorable Bobby Simpson, Mayor-President  
Mr. Paul T. Thompson, Chief Administrative Officer  
Mr. Michael E. Ponder, Parish Attorney  
Mr. Jerome M. Klier, Deputy Director of Public Works  
Mr. Kent Mudd, Special Projects Engineer  
Mr. Rick Wright, PE  
Mr. Robert Groht, Jr., Wastewater Treatment Plant Manager  
Mr. Bill McHie, MWH  
Mr. Robert Quance, USEPA Region 6  
Ms. Vivian Hare, USEPA Region 6  
Ms. Peggy Hatch, LDEQ  
Mr. Bruce Hammatt, LDEQ

# MEMORANDUM



**MWH**  
MONTGOMERY WATSON HARZA

---

**To:** Kent Mudd  
**Date:** April 19, 2004  
**cc:** Bill McHie  
**File No.** SSO 4.7  
**From:** Jarrod Tramonte / Chris Young  
**Subject:** Environmental Results Monitoring Program  
Phase I, Quarter 6 Results

---

On February 6, 2004, the City of Baton Rouge, Parish of East Baton Rouge (City/Parish) conducted the sixth quarterly Phase I Baseline Monitoring event of the Environmental Results Monitoring Program. This was the final Baseline Monitoring event, per the requirements of the 2002 consent decree. The purpose of this memorandum is to characterize the rain event, summarize the sampling procedures, and report laboratory analysis results. Background information regarding the purpose and procedures of the Environmental Results Monitoring (ERM) program can be found in the ERM Plan (Exhibit G to the Consent Decree).

## RAIN EVENT

Rain data was recorded at USGS monitoring stations located upstream of each of the designated sample locations. The locations of the observed USGS monitoring stations are shown in Figure 1 along with sample site locations.

Rainfall data from the February 5-6 event is summarized graphically in Figure 2. As shown in Figure 2, this was a drenching, long-duration rain event, with continuous rainfall occurring over a 24-hour period. The highest intensity occurred during the evening hours of February 5. The end of rainfall occurred at approximately midnight of February 6. A summary of the rainfall at each sample site at the time of sample collection is provided in Table 1.

**Table 1. Sample Time/Rainfall Summary for Phase 1, Quarter 6**

Location	Sample Time	Total Rainfall (in)	Peak Intensity (in/hr)
1 - Greenwell Springs Rd. & Comite River	8:45 a.m.	3.68	3.16
2 - O'Neal Ln. & Jones Creek	9:00 a.m.	2.55	2.08
3 - Highland Rd & Ward Creek	9:17 a.m.	2.23	2.20
4 - Grand Lakes Dr. & Bayou Fountain	9:30 a.m.	1.75	1.68

## PROCEDURES

One grab sample was taken from each of the four designated sample sites between the hours of 8:45 a.m. and 9:30 a.m, February 6. Samples were drawn from the approximate center of each stream. Grab samples from each site were poured into three separate laboratory-prepared sample containers. Sample containers were labeled with sample date, time, and location name immediately following sample collection. Samples were stored on ice and delivered to the laboratory immediately following collection of the final sample.

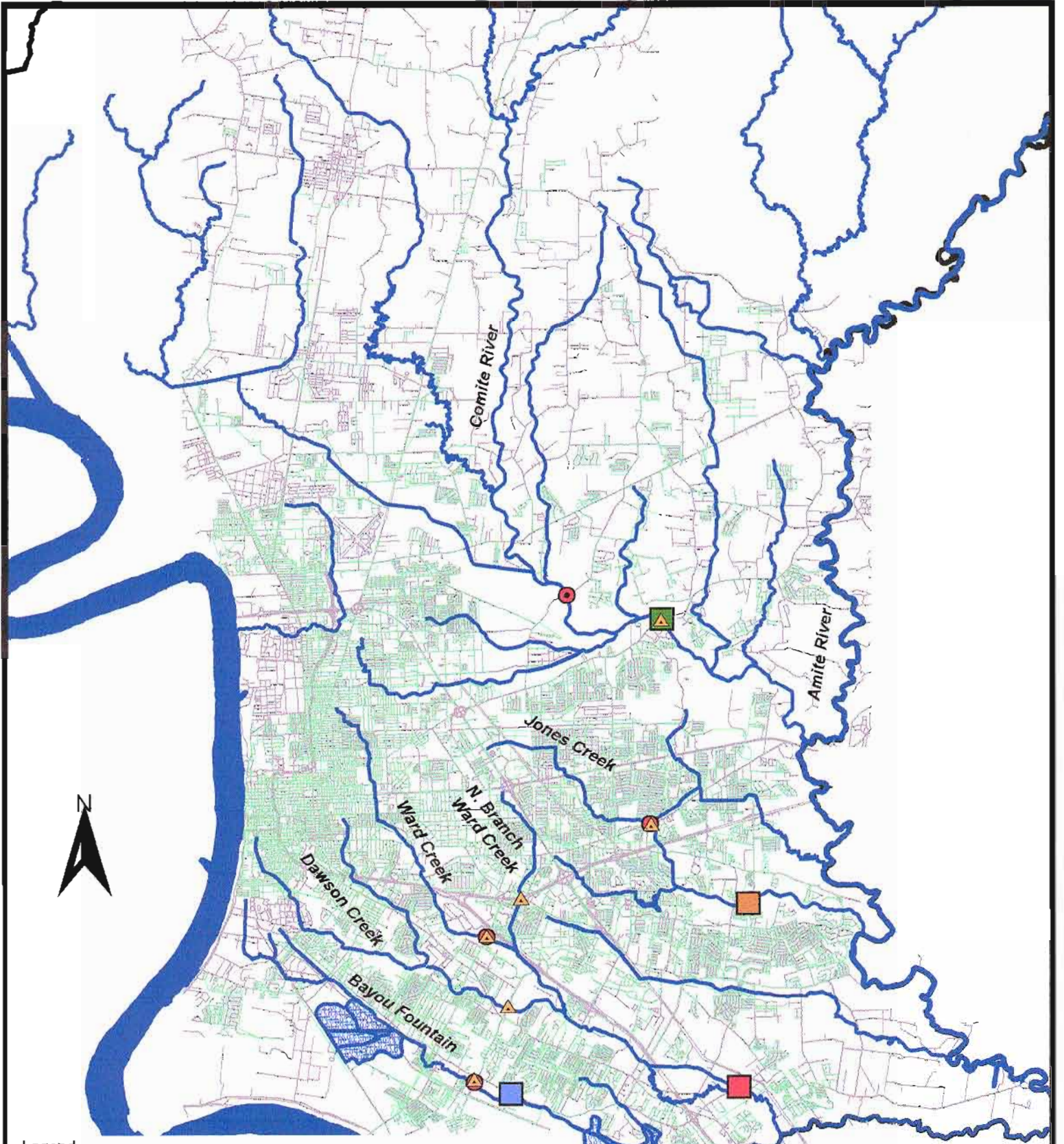
All samples were analyzed at a local laboratory for the parameters established in the ERM plan, which include fecal coliform, fecal streptococcus, and enterococcus. Sample holding times and laboratory procedures conformed to applicable sections of the USEPA “Methods for Chemical Analysis of Water and Wastes”, 1983, and ASTM “Standard Methods for Examination of Water and Wastewater”, 19<sup>th</sup> Edition, 1995.

## RESULTS

Results of laboratory analyses are summarized in Table 2. Further analysis of these results, in combination with the results of previous Phase I Baseline events, will be provided. Gage height/elevation data from February 5-6, recorded at USGS stream flow monitoring stations upstream of each sample location, is presented in Figure 3.

**Table 2. WQ Sampling results for Phase I, Quarter 6**

Parameter	Sampling Location			
	1-Comite River	2-Jones Creek	3-Ward Creek	4-Bayou Fountain
Fecal Coliform (col/100 mL)	188	188	900	350
Fecal Streptococcus (col/100 mL)	ND <sup>(1)</sup>	ND <sup>(1)</sup>	ND <sup>(1)</sup>	ND <sup>(1)</sup>
Enterococcus (col/100 mL)	ND <sup>(1)</sup>	ND <sup>(1)</sup>	ND <sup>(1)</sup>	ND <sup>(1)</sup>
Total Rainfall (in) <sup>(2)</sup>	3.68	2.55	2.23	1.75
Gage Height (ft) <sup>(2)</sup>	39.08 <sup>(3)</sup>	21.85	14.73 (N. Branch) 13.12 (Main Branch) 14.49 (Dawson Ck)	9.79
<sup>(1)</sup> ND = None detected (<2 colonies/100 mL) <sup>(2)</sup> Values at time of sample collection <sup>(3)</sup> Elevation (ft NGVD)				

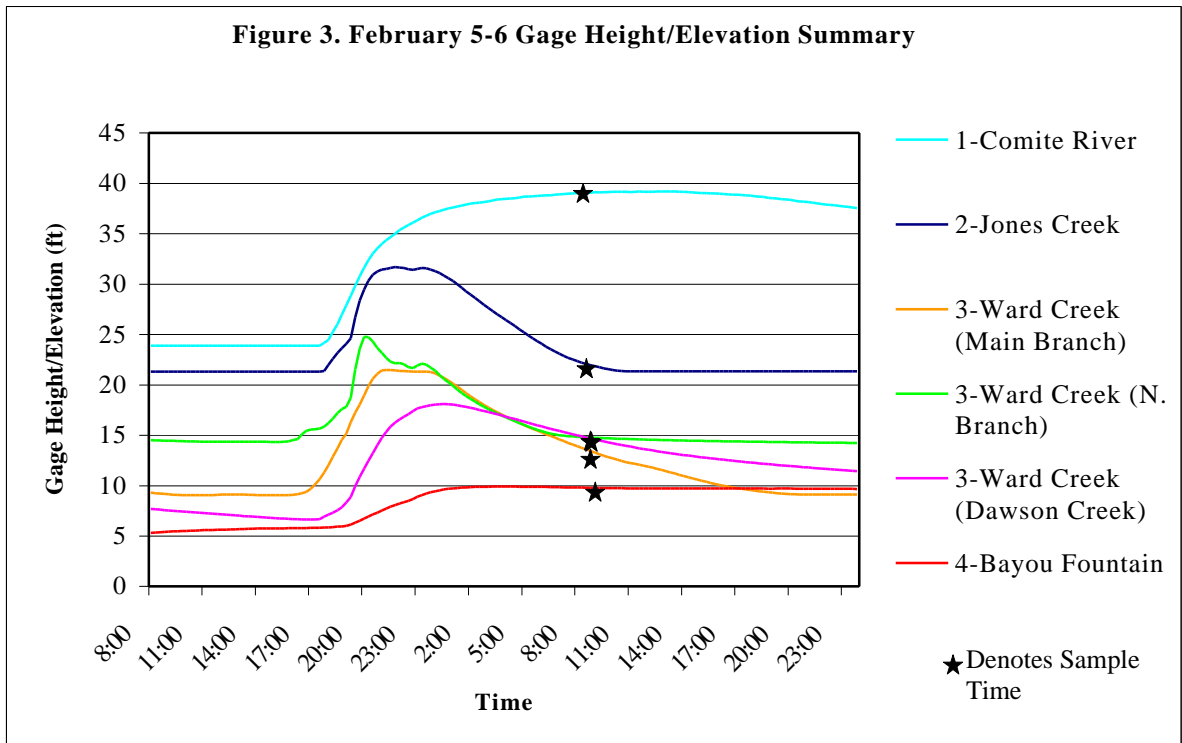
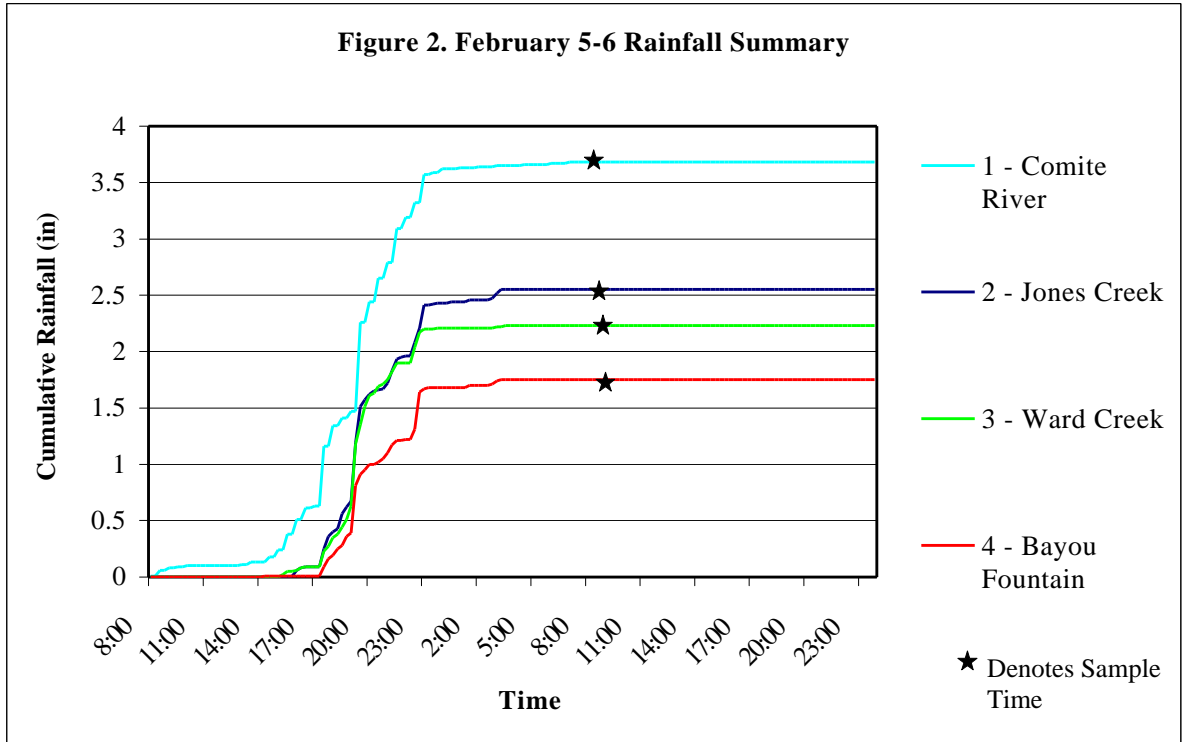


**Legend**

**Sampling Locations**

- |   |  |
|---|--|
| <span style="color: red;">■</span> Highland Road & Ward Creek             | <span style="color: red;">●</span> USGS Monitoring Stations (Rain)   |
| <span style="color: blue;">■</span> Grand Lakes Dr. & Bayou Fountain      | <span style="color: orange;">▲</span> USGS Monitoring Stations (Gage Height / Elevation)                         |
| <span style="color: orange;">■</span> O'Neal Lane & Jones Creek           | <span style="color: blue;">—</span> Major Waterways  |
| <span style="color: green;">■</span> Greenwell Springs Rd. & Comite River | <span style="color: green;">—</span> Existing Sanitary Sewers  |
|   | <span style="color: grey;">—</span> Parish Streets   |
|   | <span style="border: 1px solid black; display: inline-block; width: 10px; height: 10px;"></span> Parish Boundary |

ERM Results - Ph. 1, Qtr. 4  
Figure 1 - Sampling Locations



Note: Data was recorded at USGS rainfall/stream flow monitoring stations upstream of sample locations.



February 25, 2004

Richard Wright, P.E.  
City of Baton Rouge  
Post Office Box 1471  
Baton Rouge, Louisiana 70821

RE: Reconditioning of Trickling Filter Rotary Distributors South WWTP  
City Parish Project No. 02-WWT-02

SUBJECT: Re-mobilization

Dear Mr. Wright:

Cajun Constructors, Inc. (CAJUN) successfully completed Start-up of Trickling Filters No. 5 & No. 7 for the above referenced project on February 9, 2004. Per the specifications, the 21-day run period will expire on Monday, March 1, 2004.

CAJUN will be on site this day to begin demolition of Trickling Filters No. 6 & 8. Please make arrangements to have these units shut down on that morning so that we may begin work immediately.

Should you have any questions, feel free to call.

Very truly yours  
CAJUN CONSTRUCTORS, INC.

A handwritten signature in black ink, appearing to read "David Abrusley".

David Abrusley  
Assistant Project Manager

DA/vpl

cc: Chron  
File 1.20 (03-128)  
Mr. Fred Raiford, III (City of BR)  
Mr. Jerome Klier, P.E. (City of BR)  
Mr. Kent Mudd, P.E. (City of BR)  
Mr. Charles Woodruff, P.E. (City of BR)  
Mr. Jim Thompson  
Mr. Gray Sexton, Attorney at Law  
Mr. Lane Grigsby (CAJUN)

PO Box 104

Baton Rouge LA 70821-0104

225 753-5857

FAX 225 751 9777



# **Ballasted Flocculation Pilot Testing Equipment Photographs**



The above photo shows the ballasted flocculation pilot testing equipment located at the SWWTP. Starting from the left, the first unit is a storage/mixing tank utilized by both sets of equipment, the middle unit is the DensaDeg equipment and the unit to the right is the Actiflo equipment. Behind the equipment is bar screen building, to the left is the administration building, and to the right is the influent pump station building.

Both the DensaDeg and Actiflo systems use coagulation and flocculation, followed by lamella clarification to achieve high TSS and BOD<sub>5</sub> removal efficiencies in a compact package unit. The difference between the two systems is the ballasting agent. DensaDeg uses return sludge while Actiflo uses microsand.

Pilot testing will evaluate the two systems during wet weather events. This testing will develop operational and design data and evaluate the treatment viability of the two systems. Additional photographs follow.









## Department of Public Works

City of Baton Rouge  
Parish of East Baton Rouge

Post Office Box 1471  
Baton Rouge, Louisiana  
70821

file  
BRSSO 4.1  
PROJECT

March 11, 2004

Chief  
Water Enforcement Branch (6EN-W)  
Compliance Assurance and Enforcement Division  
U.S. Environmental Protection Agency - Region 6  
1445 Ross Avenue Suite 1200  
Dallas, TX 75202-2733

Subject: Baton Rouge City/Parish Consent Decree  
Civil Action No. 01-978-B-M3  
First and Second Remedial Measures Action Plan Revisions

Attention: Vivian Hare (6EN-W)

The City of Baton Rouge / Parish of East Baton Rouge is submitting herewith a modification of the 1<sup>st</sup> and 2<sup>nd</sup> Remedial Measures Action Plan (RMAP) as permitted by Section XII paragraph 33 and Section XXXIV paragraph 118 of the subject Consent Decree. Documentation includes the following attachments:

- Revised RMAP 1 & 2 project list and description.
- Revised task milestones for RMAP 2 Construction Completion
- Revised total spending plan for RMAP 1 and 2.
- Revised schedule of projects for RMAP 1 & 2.

Modifications to both RMAP's are being requested for the following reasons:

1. To provide for logical construction and start-up sequencing, some projects have been recombined with other projects, and therefore some project numbers have been deleted.
2. Permitability and implementation of Ballasted Flocculation Units for treatment plants.
3. We are proposing to add new projects to replace existing projects, accomplishing the same objectives for either less money or for other operational advantages.
4. Some rehabilitation projects, like N-12 & N-99 have been broken into smaller construction projects.
5. Tunnel projects T-01 through T-17 have been regrouped to reflect current Tunnel routing.

Chief, Water Enforcement Branch (6EN-W)

March 11, 2004

Page 2

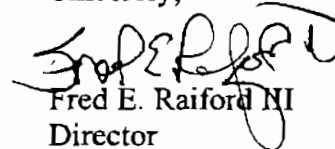
The attached spending plan outlines the estimated expenditures through the completion of work in accordance with the revised sequence of work.

**These changes will not affect the final Consent Decree RMAP construction date of January 1, 2015.**

With this documentation we have met the requirements of Section XXXIV "Modification" paragraph 118 of the Consent Decree and do respectfully request that the attached modifications be approved by the EPA and LDEQ officials.

I certify that the information contained in or accompanying this Modification to the Consent Decree is true, accurate and complete. As to those identified portions of this submission for which I cannot personally verify their truth and accuracy, I certify as the official having supervisory responsibility for the persons who, action under my direct instructions, made the verification, that this is true, accurate and complete.

Sincerely,



Fred E. Raiford III  
Director

#### Attachments

cc: The Honorable Bobby Simpson, Mayor-President  
Mr. Paul Thompson, Chief Administrative Officer  
Mr. Jim Thompson  
Mr. Jerome M. Klier  
Mr. Jeff Broussard  
Mr. Kent Mudd  
Mr. Rick Wright  
Mr. Robert Groht  
Mr. Mark LeBlanc  
Mr. Michael T. Donnellan (DOJ)  
Mr. Carlos Zequeira (EPA 6RC-EA)  
Ms. Vivian Hare (EPA 6EN-WC)  
Mr. Bob Quance (EPA)  
Mr. Bruce Hammatt (LDEQ)  
Ms. Peggy Hatch (LDEQ)  
Mr. Bill McHie (MWH)

**Baton Rouge SSO Program  
Consent Decree Collection System Remedial Program  
Revised Description of First RMAP Projects  
(Projects from 2001 – 2007)**

These descriptions are to provide general information about the type of work to be completed for each project, as identified through hydraulic computer modeling. It is anticipated that, during engineering and design, the project details may change due to site constraints or optimization of the design, however the overall program objectives will still be met.

**North CSD/STN Area**

**01-RMP-N02 PS49/PS52 Area Upgrades**

- Construct new PS49 force main
- Replacement selected gravity sewers

**01-RMP-N05 PS24 & 43 Area Upgrades**

- Reconstruction of PS24/24A
- Construction of new gravity sewers
- Replacement of selected gravity sewers

~~**01-RMP-N06 PS43/PS44 Area Upgrades**~~

This project has been incorporated into 01-RMP-N05

**01-RMP-N09 PS44/PS46 Area Upgrades**

- Replacement of selected gravity sewers

**01-RMP-N10 PS240/PS45 Area Upgrades:**

- Replacement of PS141 force main
- Abandoning of PS241 and associated force main
- Replacement of PS240 and force main
- Replacement of selected gravity sewers

**01-RMP-N11 PS65 Area Upgrades**

- Abandoning of PS65 and associated force main and modifying PS65A to be the primary station
- Replacement of PS64
- Construction of 2 storage tanks
- Replacement of selected gravity sewers



**03-RMP-N12 Scotlandville Area Lateral Rehabilitation**

- Lateral sewer rehabilitation just upstream of the North WWTP

**03-RMP-N14 Bellingrath Rehabilitation (Formerly Part of N-99)\***

- Comprehensive rehabilitation upstream of PS164, PS200, PS220, PS280, PS285, PS286, and PS422

**03-RMP-N15 Ridgewood Rehabilitation (Formerly Part of N-99)\***

- Comprehensive rehabilitation upstream of PS113, PS121, PS138, PS160, PS197, PS207, and PS334

**03-RMP-N16 Annual Rehabilitation Contract #1 (Formerly Part of N-99)\***

- Comprehensive rehabilitation upstream of PS72, PS106, PS123, PS124, PS132, PS183, PS192, PS218, PS234, PS249, PS263, PS264, PS265, PS289, PS320, PS325, and PS371

**03-RMP-N17 Annual Rehabilitation Contract #3 (Formerly Part of N-99)\***

- Comprehensive rehabilitation upstream of PS80, PS94, PS119N, PS128, PS150, PS166, PS194, PS246, PS291, PS293, PS313, PS341, PS425, and PS334

**03-RMP-N18 Annual Rehabilitation Contract #4 (Formerly Part of N-99)\***

- Comprehensive rehabilitation upstream of PS116, PS130, PS137, PS167, PS 195, PS 222, PS233, PS243, PS255, PS271, PS275, PS276, PS 277, PS282, PS288, and PS361

**03-RMP-N19 Annual Rehabilitation Contract #5 (Formerly Part of N-99)\***

- Comprehensive rehabilitation upstream of PS93, PS125, PS152, PS155, PS181, PS187, PS198, PS202, PS230, PS231, PS284, PS406

**04-RMP-N22 Choctaw Storage\***

- Construction of an approximately 50 million gallon storage facility

**04-RMP-N23 North Area Rehabilitation (Formerly Part of N-12)\***

- Comprehensive rehabilitation upstream of PS54, PS47, PS44, and PS79

**00-RMP-N31 Sewer Rehabilitation (Formerly Part of N-12)\***

- Rehabilitation upstream of PS45.

## **Central CSD Area**

### **01-RMP-C03 PS2 Area Upgrades**

- Comprehensive rehabilitation in the PS 2 basin

## **South CSD/STN Area**

### **99-RMP-S01B SWWTP Upgrades**

- Upgrade of influent pump station capacity at South WWTP

### **99-RMP-S08 Industriplex Area Upgrades**

- Construction of new deep gravity sewer
- Construction of a new pump station and force main
- Abandon PS389, PS355, PS331, PS287, PS252, and PS332

### **99-RMP-S11 PS211 Area Upgrades**

- Comprehensive rehabilitation in and upstream of the PS211 basin

### **03-RMP-S14 Kleinpeter Area Upgrades**

- Upgrade of 3 existing pump stations
- Construction of new force mains
- Construction of new pump station and force main
- Construction of new gravity sewers

### **99-RMP-S16 PS136 Area Upgrades**

- Construction of new deep gravity sewer
- Construction of a new pump station and force main
- Abandon PS143, PS216, PS270, PS136, PS168, PS328, PS217, PS134, and PS135

**Baton Rouge SSO Program  
Consent Decree Collection System Remedial Program  
Revised Description of Second RMAP Projects  
(Projects from 2002 thru 2015)**

These descriptions are to provide general information about the type of work to be completed for each project, as identified through hydraulic computer modeling. It is anticipated that, during engineering and design, the project details may change due to site constraints or optimization of the design, however the overall program objectives will still be met.

**North CSD/STN Area**

**04-RMP-N01 Choctaw Area Pump Station**

- Construction of a new pump station

**04-RMP-N03 North Park Area Upgrades**

- Construction of seven new pump stations
- Modification and upgrade of four existing pump stations
- Construction of new force mains
- Replacement of selected gravity sewers

**06-RMP-N04 PS47 Area Upgrades**

- Upgrade of pump stations
- Replacement of selected gravity sewers and force mains

**01-RMP-N07 PS39/PS55 Area Upgrades**

- Abandoning of PS39 and PS55
- Replacement of selected gravity sewers

**99-RMP-N08 PS45 Area Upgrades**

- Upgrade of PS38
- Modification of PS45
- Replacement of PS79 and construction of new force main
- Raising and sealing three manholes
- Replacement of selected gravity sewers

**04-RMP-N13 North Choctaw Area Upgrades**

- Construction of a new pump station
- Construction of deep gravity sewer lines
- Construction of new force mains
- Modification to PS52

**05-RMP-N20 North Influent Force main\***

- Construction of new force main

**05-RMP-N21 North Influent Pump Station\***

- Construction of new PS
- Construction of new force main

**Central CSD Area**

**06-RMP-C01 PS59 Area Upgrades**

- Upgrade PS59
- Construction of gravity relief sewers
- Construction of a new pump station and force main
- Replacement of selected gravity sewers and force mains

**06-RMP-C02 PS23/PS60 Area Upgrades**

- Construction of four new pump stations and force mains
- Replacement of selected gravity sewers

**10-RMP-C04 PS4 Area Upgrades**

- Replacement of selected gravity sewers

**09-RMP-C05 PS5 Area Upgrades**

- Replacement of selected gravity sewers in the PS5 basin

**11-RMP-C06 PS15/PS48/PS60 Area Upgrades**

- Replacement selected gravity sewers

**08-RMP-C07 PS1/PS2/PS10 Area Upgrades**

- Upgrade PS 6 and associated force main
- Replacement of selected gravity sewers

**South CSD/STN Area**

**06-RMP-S01A PS58 Area Upgrades #1**

- Upgrade PS 30 and associated force main
- Replacement of selected gravity sewers

**07-RMP-S02 PS327/PS253 Area Upgrades**

- Replacement of selected gravity sewers
- Upgrade of PS327 and PS253
- Construction of new force mains

**09-RMP-S03 PS58 Area Upgrades #2**

- Replacement of selected gravity sewers
- Upgrade of PS307 and PS395

**09-RMP-S04 PS66 Area Upgrades**

- Replacement of selected gravity sewers

**04-RMP-S05 South Choctaw Area Upgrades**

- Construction deep gravity sewer
- Construction of new force main

**08-RMP-S06 PS31 Area Upgrades**

- Replacement of selected gravity sewers

**07-RMP-S07 PS944 Area Upgrades**

- Upgrade of PS223 and associated force main, and upgrade of PS203 and PS108
- Replacement of selected gravity sewers
- Upgrade of STN force main

**07-RMP-S09 Gardere/GSRI Area Upgrades**

- Upgrade PS329 and associated force main, and upgrade PS102 and PS 386
- Replacement of selected gravity sewers

**10-RMP-S10 Tiger Bend / Antioch Area Upgrades**

- Upgrade of 5 existing pump stations
- Upgrade of force mains
- Replacement of selected gravity sewers

**08-RMP-S12 PS177 Area Upgrades**

- Replacement of selected gravity sewers
- Upgrade PS 391 and PS 172

- Upgrade of PS 258 and associated force main

**08-RMP-S13 PS170 / PS274 Area Upgrades**

- Replacement of selected gravity sewers
- Upgrade of PS 170 and associated force main
- Upgrade of PS 274, PS 338, and PS 379

**08-RMP-S15 Hoo Shoo Too and Jefferson Hwy Area Upgrades**

- Upgrade of 3 existing pump stations
- Construction of new force mains

**07-RMP-S17 South Siegen Area Upgrades**

- Upgrade of 2 existing pump stations
- Construction of new force mains
- Replacement of selected gravity sewers

**07-RMP-S18 PS40/PS57 Area Upgrades**

- Upgrade PS40
- Replacement of selected gravity sewers

**08-RMP-S19 PS53 Area Upgrades #1**

- Upgrade of 1 existing pump station
- Construction of new force mains
- Replacement of selected gravity sewers

**08-RMP-S20 PS53 Area Upgrades #2**

- Upgrade of 2 existing pump stations
- Replacement of selected gravity sewers

**11-RMP-S21 BPS100 Area Upgrades**

- Upgrade of 6 existing pump stations
- Construction of new force mains
- Replacement of selected gravity sewers

**11-RMP-S22 BPS508 Area Upgrades**

- Upgrade PS 101A
- Construction of new force mains
- Replacement of selected gravity sewers

- Comprehensive rehabilitation in the PS153 basin

**10-RMP-S23 PS101/PS21 Area Upgrades**

- Upgrade of 2 existing pump stations
- Construction of new force mains
- Replacement of selected gravity sewers

**05-RMP-S24 PS50 Area Upgrades**

- Upgrade of 3 existing pump stations
- Construction of gravity relief sewer
- Construction of new force mains
- Replacement of selected gravity sewers

**08-RMP-S25 PS236 Area Upgrades**

- Upgrade of 3 existing pump stations
- Construction of new force mains
- Replacement of selected gravity sewers
- Construction of storage facilities

**04-RMP-S26 Magnolia Point Area Upgrades\***

- Replacement of selected gravity sewers

**03-RMP-T01 SWWTP Tunnel Pump Station**

- Construction of a new pump station

**03-RMP-T02 CWWTP Tunnel Pump Station**

- Construction of a new pump station and force main

**03-RMP-T03 Central Service Area Trunk Tunnels**

- Construction of deep gravity sewer

**03-RMP-T04 South Service Area Trunk Tunnels 1**

- Construction of deep gravity sewer

**04-RMP-T05 Bluebonnet / Airline Extension Tunnels**

- Construction of deep gravity sewer

**06-RMP-T06 Airline Extension Tunnels**

- Construction of deep gravity sewer

**07-RMP-T07 Old Hammond Tunnels**

- Construction of deep gravity sewer

~~**T08 – T18 Various Tunnel Projects**~~

- The tunnel projects were regrouped to reflect current tunnel routing. Work in Projects T08 – T18 was redefined and incorporated into various existing projects in the South CSD/STN Area and Central CSD Area.

**04-RMP-NBFS BFU for NWWTP**

- Construction of an approximately 70 MGD high rate treatment facility and disinfection
- Construction of a effluent gravity line.

~~**03-RMP-BFU2 Ballasted Flocculation Unit**~~

This project was deleted due to the utilization of a storage vault.

**05-RMP-CBFU BFU for CWWTP**

- Construction of an approximately 80 MGD high rate treatment facility and disinfection
- Construction of a effluent pump station and effluent force main

**04-RMP-SBFU BFU for SWWTP**

- Construction of an approximately 90 MGD high rate treatment facility and disinfection
- Construction of a effluent pump station and effluent force main



# Baton Rouge SSO Program

## Consent Decree Collection System Remedial Program

### Task Milestones for Construction Completion

The following projects have been re-assigned to RMAP 2

#### **04-RMP-N01 – Choctaw Area Pump Station**

The scope of work for this project has changed to include the Pump Station portion of work originally associated with N-13. Completion of this new scope of work needs to coincide with the overall completion of the Choctaw Area Upgrades in Mid 2007. We request that this project be re-assigned to RMAP 2 and included in the 33% Complete Milestone. (See revised RMAP 2 Milestone Chart)

#### **06-RMP-N04 – PS 47 Area Upgrades**

After reviewing a logical sequence of work it was determined that the completion of this project would have no systematic benefit to the SSO Program until after completion of Project N03 – North Park Area Upgrades. We request that this project be re-assigned to RMAP 2 and included in the 66% Complete Milestone. (See revised RMAP 2 Milestone Chart)

#### **01-RMP-N07 – PS 39 & 55 Area Upgrades**

After reviewing a logical sequence of work it was determined that the completion of this project would have no systematic benefit to the SSO Program until after completion of Project N13 – Choctaw Area Upgrades. We request that this project be re-assigned to RMAP 2 and included in the 33% Complete Milestone. (See revised RMAP 2 Milestone Chart)

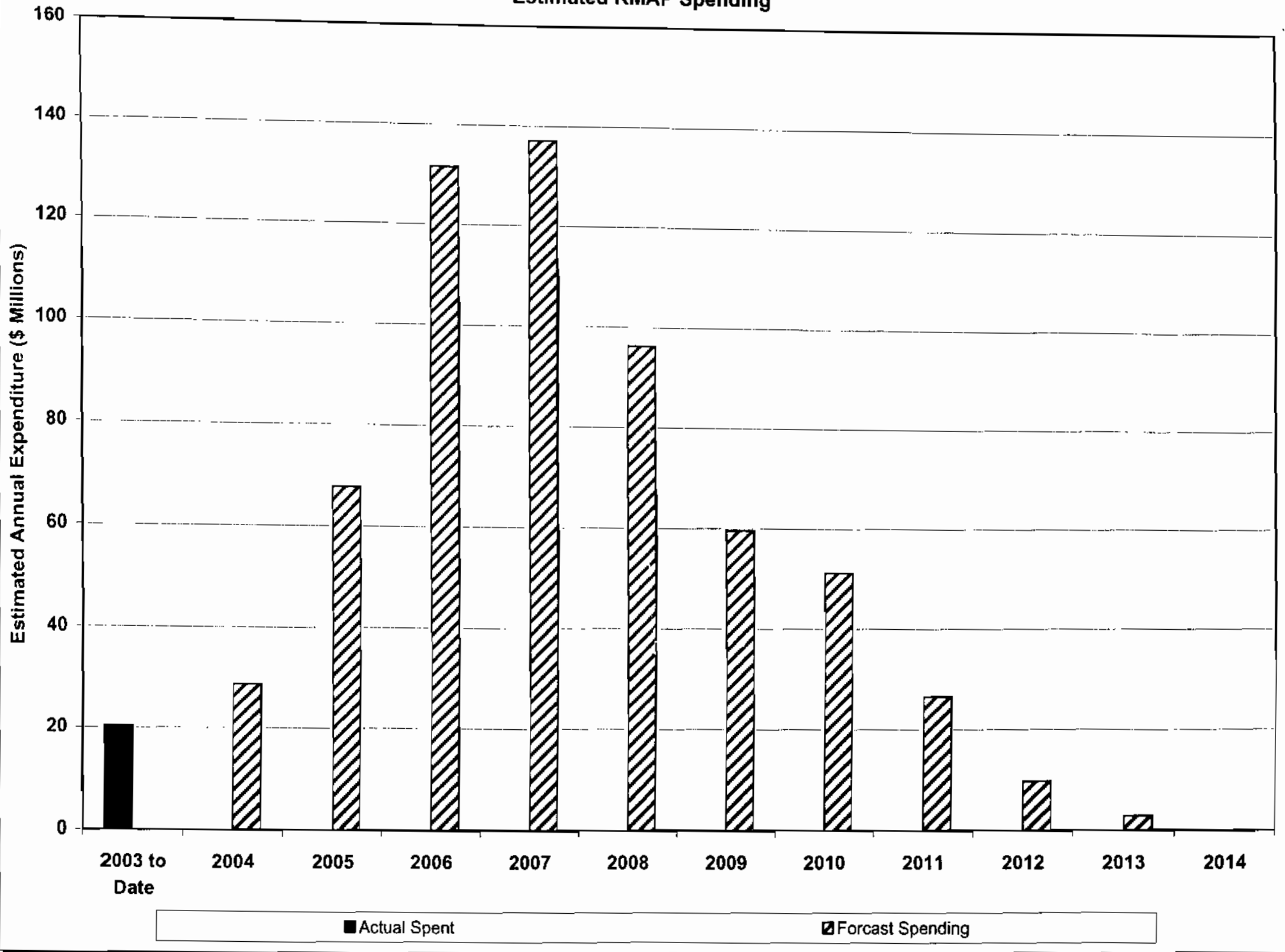
#### **04-RMP-N13 – Choctaw Area Upgrades**

The start of this project was delayed pending completion of the Army Corp of Engineers Vault Study. In addition, revised estimates to the overall time required to complete design and construction have indicated that it would not be feasible to complete such an amount of work within the RMAP 1 Milestone timeframe. We request that this project be re-assigned to RMAP 2 and included in the 33% Complete Milestone. (See revised RMAP 2 Milestone Chart)

### Revised RMAP 2 Milestones

Project Status	33% Construction Complete	66% Construction Complete
NTP Issued	NVLT, S-BFU, N-01, N-03, N-07, N-08, N-13, N-14, N-15, N-16, N-17, N-18, N-21, N-22, T-01, T-03, T-04, T-05, N-20, S-05	N-04, C-05, S-03, S-06, S-25, T-07
100% Complete	N-02, N-05, N-09, N-10, N-11, N-12, C-03, S-01B, S-08, S-11, S-14, S-16, T-02, S-26	N-08, N-01, N-02, N-03, N-07, N-09, N-10, N-11, N-12, N-13, C-01, C-02, C-07, S-01A, S-01B, S-02, S-07, S-08, S-09, S-11, S-12, S-13, S-14, S-15, S-16, S-17, S-18, S-19, S-20, T-01, T-02, T-03, T-04, T-05, T-06, CBFU, N-20, NVLT, SBFU, N-21, S-05

# Baton Rouge SSO Program Estimated RMAP Spending



Start	Finish	Year																
		1999	2000	2001	2002	2003	2004	2005	2006	2007	2008	2009	2010	2011	2012	2013	2014	2015
<b>RMAP #1</b>																		
+ 01-RMP-C03 / PS2 Area Rehabilitation																		
21AUG01A	28SEP02A																	
+ 01-RMP-N02 / PS49 & 52 Area Upgrades																		
13NOV01A	17APR05																	
+ 01-RMP-N05 / PS 24 & 43 Area Upgrades																		
17MAY01A	23APR05																	
+ 01-RMP-N09 / PS 44 & 46 Area Upgrades																		
13NOV01A	26SEP04																	
+ 01-RMP-N10 / PS 240 & 45 Area Upgrades																		
17MAY01A	04JUN05																	
+ 01-RMP-N11 / PS 65 Area Upgrades																		
17MAY01A	30MAR06																	
+ 03-RMP-N12 North Area Lateral Rehab																		
15NOV03A	14MAR06																	
+ 03-RMP-N14 Bellingrath Area Rehab																		
11JUN03A	06JAN05																	
+ 03-RMP-N15 Frenchtown Rd Area Rehab																		
11AUG03A	01MAY05																	
+ 04-RMP-N22 Choctaw Area Storage																		
07MAY04	07MAR07																	
+ 04-RMP-N23 Scottlandville Area Rehab																		
27OCT03A	12JUN05																	
+ 00-RMP-N31 / PS 45 Area Rehab																		
21JAN00A	23JAN01A																	
+ 99-RMP-N99 / North Area Investigations																		
01JAN01A	31DEC03A																	
+ 99-RMP-S01B / SWWTP Influent Pump Station																		
01NOV99A	14APR03A																	
+ 99-RMP-S08 / Industriplex Area Upgrade																		
23SEP99A	10JAN06																	
+ 99-RMP-S11 / PS 211 Area Upgrades																		
24FEB03A	22DEC03A																	
+ 03-RMP-S14 / Kleinpeter Area Upgrades																		
17FEB03A	13JAN06																	
+ 99-RMP-S16 / PS 136 Area Wastewtr Upgrades																		
23SEP99A	28NOV05																	

Start Date 01JAN99  
 Finish Date 31DEC14  
 Data Date 30JAN04  
 Run Date 09MAR04 10:08

SSOP  
 Sheet 1 of 1  
 City of Baton Rouge / Parish of East Baton Rouge  
 SSO Consent Decree Projects  
 RMAP #1 Projects



Start	Finish																	
		1999	2000	2001	2002	2003	2004	2005	2006	2007	2008	2009	2010	2011	2012	2013	2014	2015
<b>RMAP2</b>																		
+ 04-RMP-NBFS / North BFS Project																		
10JUN05	03DEC08																	
+ 04-RMP-SBFS / South BFS for SWWTP																		
05MAR04	08FEB08																	
+ 05-RMP-CBFS / Central BFS for CWWTP																		
10JUN05	03DEC08																	
+ 06-RMP-C01 / PS59 Area Upgrades																		
15JAN06	05FEB09																	
+ 06-RMP-C02 / PS 23 & 60 Area Upgrades																		
15JAN06	05JUN09																	
+ 10-RMP-C04 / PS 4 Area Upgrades																		
15JAN10	26JUN12																	
+ 09-RMP-C05 / PS5 Area Upgrades																		
15JAN09	31MAR11																	
+ 11-RMP-C06 / PS 15 / 48 / 60 Area Upgrades																		
15JAN11	25JUN13																	
+ 08-RMP-C07 / PS 1 / 2 / 10 Area Upgrades																		
15JAN08	02JUL10																	
+ 04-RMP-N01 / Choctaw Area Pump Station																		
03MAY04	04JUN07																	
+ 04-RMP-N03 / North Park Area Upgrades																		
14MAY04	27OCT08																	
+ 06-RMP-N04 / PS47 Area Upgrades																		
13JAN06	27JAN09																	
+ 01-RMP-N07 / PS 39 & 55 Area Upgrades																		
30NOV01A	27AUG07																	
+ 99-RMP-N08 / PS 45 Area Upgrades																		
23SEP99A	27OCT08																	
+ 04-RMP-N13 / North Choctaw Area Upgrades																		
05MAR04	27AUG07																	
+ 03-RMP-N16 Annual Rehab Contract #1																		
10JUL03A	25JAN07																	
+ 03-RMP-N17 Annual Rehab Contract #3																		
31JUL03A	31DEC07																	
+ 03-RMP-N18 Annual Rehab Contract #4																		
12JAN04A	31DEC07																	

Start Date 01JAN99  
 Finish Date 31DEC14  
 Data Date 30JAN04  
 Run Date 09MAR04 10:55

SSOP

Sheet 1 of 3

City of Baton Rouge / Parish of East Baton Rouge  
 SSO Consent Decree Projects  
 RMAP #2 Projects



Start	Finish																	
		1999	2000	2001	2002	2003	2004	2005	2006	2007	2008	2009	2010	2011	2012	2013	2014	2015
+ 03-RMP-N19 Annual Rehab Contract #5 02JAN04A	31DEC07																	
+ 05-RMP-N20 North Area Influent Forcemain 03OCT05	29JUL08																	
+ 05-RMP-N21 North Area Influent PS 03JAN05	29JUL08																	
+ 06-RMP-S01A / PS 58 Area Upgrades #1 11AUG06	25JAN09																	
+ 07-RMP-S02 / East Highland Area Upgrades 13JUL07	27NOV09																	
+ 09-RMP-S03 / PS 58 Area Upgrades #2 15JAN09	02JUN11																	
+ 09-RMP-S04 / PS 68 Area Upgrades 17JUL09	30NOV11																	
+ 04-RMP-S05 / South Choctaw Area Upgrades 02APR04	20NOV07																	
+ 08-RMP-S06 / PS 31 Area Upgrades 18JUL08	03DEC10																	
+ 07-RMP-S07 / PS 944 Area Upgrades 15JAN07	29MAY09																	
+ 07-RMP-S09 / Gardere/GSR1 Area Upgrades 15JAN07	29MAY09																	
+ 10-RMP-S10 / Tiger Bend / Antioch Area Upgrades 15JAN10	29MAY12																	
+ 08-RMP-S12 / PS 177 Area Upgrades 15JAN08	28MAY10																	
+ 08-RMP-S13 / PS 170 & 274 Area Upgrades 15JAN08	28MAY10																	
+ 08-RMP-S15 / Hoc Shoo Too/Jefferson Hwy Upgrds 07JAN08	23DEC09																	
+ 07-RMP-S17 / South Selgen Area Upgrades 15JAN07	03APR09																	
+ 07-RMP-S18 / PS 40 & 57 Area Upgrades 15JAN07	29MAY09																	
+ 08-RMP-S19 / PS 53 Area Upgrades #1 15JAN08	28MAY10																	
+ 08-RMP-S20 / PS 53 Area Upgrades #2 15JAN08	28MAY10																	

Start Date 01JAN99  
 Finish Date 31DEC14  
 Data Date 30JAN04  
 Run Date 09MAR04 10:55

SSOP

City of Baton Rouge / Parish of East Baton Rouge  
 SSO Consent Decree Projects  
 RMAP #2 Projects



Start	Finish	Year																
		1999	2000	2001	2002	2003	2004	2005	2006	2007	2008	2009	2010	2011	2012	2013	2014	2015
+ 11-RMP-S21 / BPS 100 Area Upgrades 15JAN11	26MAR13																	
+ 11-RMP-S22 / BPS 608 Area Upgrades 04JUL11	10SEP13																	
+ 10-RMP-S23 / PS 101 / 21 Area Upgrades 15JAN10	29MAY12																	
+ 05-RMP-S24 / PS 50 Area Upgrades 11NOV05	30MAY08																	
+ 08-RMP-S25 / PS 236 Area Upgrades 02JUN08	10NOV11																	
+ 04-RMP-S26 / Magnolia Pointe Area Upgrades 01MAR04	14FEB06																	
+ 03-RMP-T01 / SWWTP Tunnel Pump Station 28FEB03A	13MAY07																	
+ 03-RMP-T02 / CWWTP Tunnel Pump Station 28FEB03A	14AUG06																	
+ 03-RMP-T03 / Central Service Area Trunk Tunnels 28FEB03A	11JAN10																	
+ 03-RMP-T04 / South Service Area Trunk Tunnels 28FEB03A	30DEC10																	
+ 04-RMP-T05 / Bluebonnet / Airline Tunnels 10JAN05	26MAR11																	
+ 06-RMP-T06 / Airline Extension Tunnels 01MAR06	12DEC10																	
+ 07-RMP-T07 / Old Hammond Tunnels 01SEP05	20JUN12																	

Start Date 01JAN99 SSOP  
 Finish Date 31DEC14  
 Data Date 30JAN04  
 Run Date 09MAR04 10:55

City of Baton Rouge / Parish of East Baton Rouge  
 SSO Consent Decree Projects  
 RMAP #2 Projects

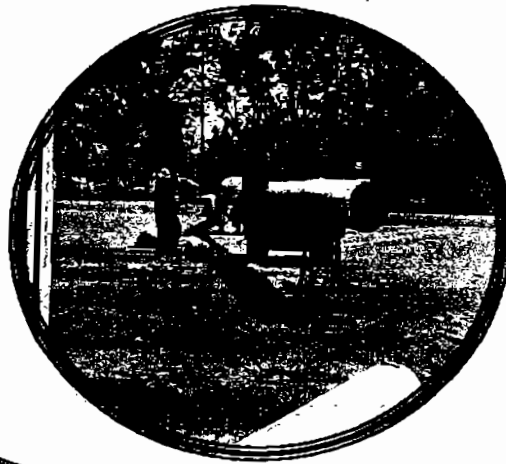




# BATON ROUGE SSO PROGRAM

March 2004

## Program Guidelines For Design Consultants

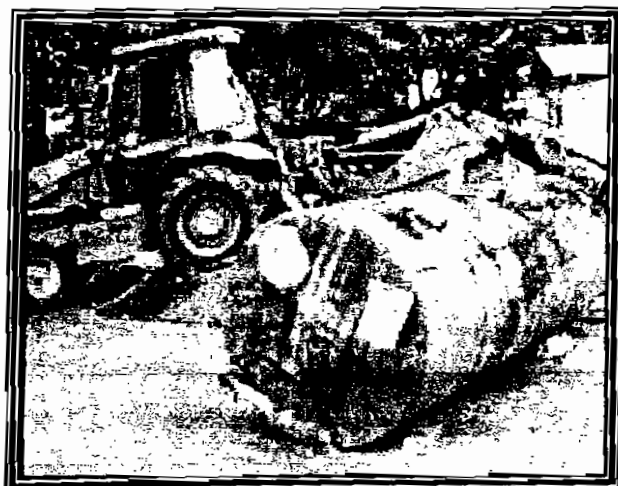
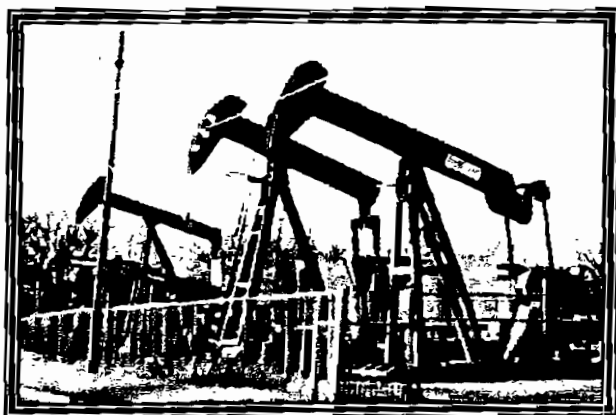




# BATON ROUGE SSO PROGRAM

October 2003

## Environmental Site Assessment Guidelines







# BATON ROUGE SSO PROGRAM

March 2004

## Subsurface Investigation Guidelines

